

This document can be provided in large print, electronic and Braille formats. Please telephone 0161 793 2500.

If you need this document translated, please contact us on the number below.

Czech

Pokud potřebujete přeložit tenhle dokument do vašeho jazyka, kontaktujte nás na uvedeném čísle.

French

Si vous avez besoin d'une traduction de ce document, veuillez nous contacter sur le numéro mentionné ci-dessous.

Polish

Jeśli potrzebują Państwo kopię tego dokumentu przetłumaczoną na Państwa język, prosimy o kontakt na numer podany poniżej.

Somali

Haddii aad u baahan tahay dukumiintigan oo luuqaddaada ku turjuman, fadlan naga la soo xiriir nambarka hoos ku qoran.

Russian

Если Вам нужен перевод данного документа на русский язык, пожалуйста, свяжитесь с нами по ниже указанному номеру.

Chinese

如果您需要此文件翻译成中文，请用以下电话号码与我们联系。

Hindi

यदि आपको इस दस्तावेज का अनुवाद आपकी भाषा में चाहिये, तो कृपया नीचे दिये नंबर पर हम से संपर्क करें।

Punjabi

ਜੇ ਤੁਹਾਨੂੰ ਇਸ ਦਸਤਾਵੇਜ਼ ਦਾ ਤਰਜਮਾ ਤੁਹਾਡੀ ਭਾਸ਼ਾ ਵਿੱਚ ਚਾਹੀਦਾ ਹੈ, ਤਾਂ ਕਰਿਯਾ ਕਰਕੇ ਹੇਠ ਦਿੱਤੇ ਨੰਬਰ ਤੇ ਸਾਡੇ ਨਾਲ ਸੰਪਰਕ ਕਰੋ।

Tigrinya

ነዚ ሰነድ ናብ ቋንቋኹም ክተርጎም እንተደኣ ደለኹም፡ በዚ ኣብ ታሕቲ ተጠቒሱ ዘሎ ቁጽሪ ተለፎን ደግልኩም ተወከሱ።

Arabic

إذا احتجت لان تترجم هذه الوثيقة الى لغتك, فالرجاء الاتصال بنا على الرقم المبين اسفله.

Farsi

اگر شما ترجمه این مطلب را به زبان خود نیاز دارید، لطفاً از طریق شماره تلفن زیر با ما تماس بگیرید.

Kurdish Sorani

ئەگەر دەخوازیت ئەم دۆکیۆمێنتە (بەلگە نامیە) وەر بگێڕدریت بۆ زمانی خۆت، ئەوا تکایە پەییوندیمان پێوە بکە لە ڕێگەی ئەم ژمارەیی خوارووە.

Pashto

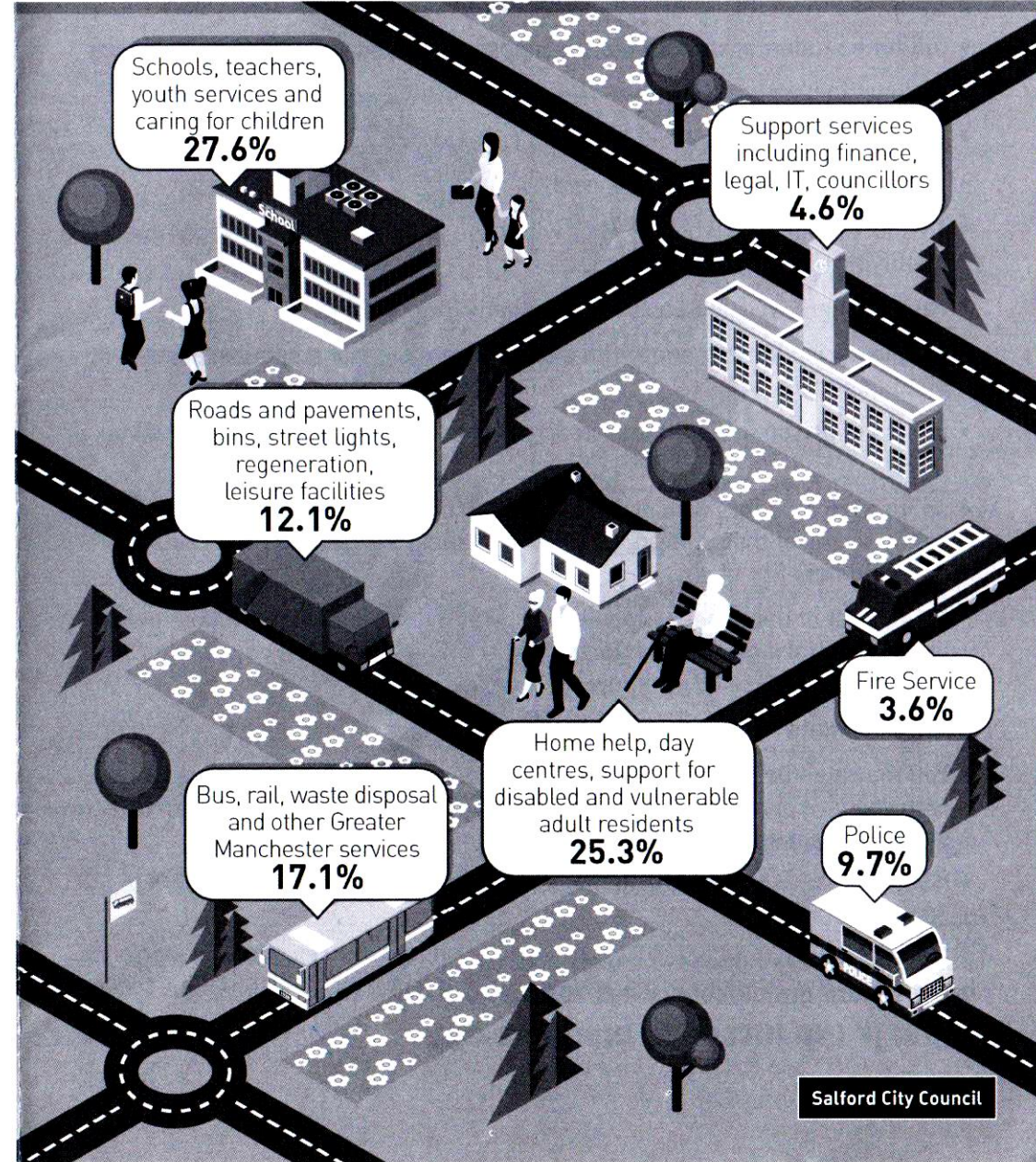
کچیری ددی سند ترجمه پخپله ژبه غواړي، لطفاً په لاندی شمیره مونږ سره اړیکه ونیسي.

Urdu

اگر آپ اس دستاویز کا اپنی زبان میں ترجمہ چاہتے ہیں، تو برائے مہربانی نیچے دئیے گئے نمبر پر رابطہ کیجئے۔

0161 793 2500

Information on your council tax 2017/18



Designed by Creative Services (creative.services@salford.gov.uk) ref: 3-4852.

Salford City Council's funding has reduced year on year since 2010. In the eight years between 2010/11 and 2017/18 we will have received £93.2 million less central government funding. This is a reduction of over 47%.

Over the same time our costs have also increased. This means we have had to find savings of over £186 million since 2010 – including £15.8 million in 2017/18. This is equivalent to a loss of £64,000 each and every day or £1,642.85 for each household in Salford. This is money that could have funded vital local services.

The council cannot continue to deliver all of the services we have provided in the past in the same way or at the same level. We continue to find new ways of doing things differently and ways to maintain services within the budget that is available to us. We are fully committed to this approach but the decisions needed to set our budget continue to get harder and harder.

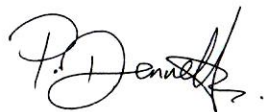
Further changes are needed if we are to continue to protect vulnerable people in the city and provide both high quality services and those that matter most to you. This year we have been forced to increase council tax charges for the second year. The council's increase is 4.99% and the graphic overleaf shows how this is broken down. Three percent of this increase is ring fenced to use specifically for adult social care services which are under considerable pressure.

The money you provide is vital in paying for local services and the breakdown of how your bill is spent is shown on the front cover graphic. You will see that over half the amount funds services for children and young people and the elderly, disabled and vulnerable in our city.

Although times are hard our investment in regeneration is paying off – with businesses attracted to our city providing much needed business rates and new residents increasing the amount of council tax that the council receives.

Though our budget pressures are immense, the sensible spending and investment decisions are bearing fruit with the potential for more jobs for local people. We have a future of growth to look forward to.

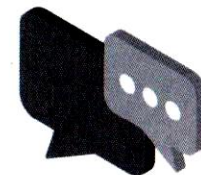
I am sure we can all agree that we want a city to be proud of and I would ask you to play your part in ensuring a better and fairer Salford.



Paul Dennett, City Mayor

What will you pay in 2017?

The amount you have to pay depends on which band your home is in. This is shown on your council tax bill.



Band	Band value	Council tax	
		2016/17	2017/18
A	Up to £40,000	£1061.42	£1111.30
B	£40,001 to £52,000	£1238.31	£1296.51
C	£52,001 to £68,000	£1415.22	£1481.74
D	£68,001 to £88,000	£1592.13	£1666.96
E	£88,001 to £120,000	£1945.94	£2037.40
F	£120,001 to £160,000	£2299.74	£2407.82
G	£160,001 to £320,000	£2653.55	£2778.26
H	Over £320,000	£3184.26	£3333.92

The bands are set by a government body which is part of HM Revenue and Customs. If you feel that your property has been placed in the wrong band you should call the Valuation Office Agency on 03000 501 501 or email ctnorth@voa.gsi.gov.uk

The council provides financial information on our website. This includes information on the charges of the police, fire and waste authorities as well as the Greater Manchester Combined Authority (which includes transport).

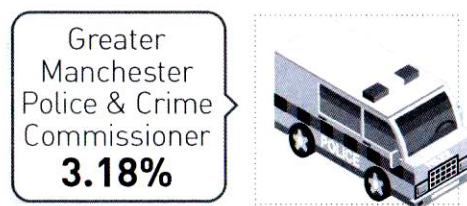
Detailed information can be found at www.salford.gov.uk/budget

What is the increase made up of?

From 1 April your council tax bill will be rising. There is a 4.99% increase for council services, made up of a 1.99% increase in basic council tax and 3% to help fund adult social care.

At Salford Council raising tax is always a last resort. However, we believe this increase is essential to protect services for vulnerable residents.

For more information on the budget process www.salford.gov.uk/talkbudget



The breakdown of the actual percentage increases are shown above. The council elements are 4.99%.

Further information can be found at www.salford.gov.uk/budget



Paying your council tax

Details of payment methods are shown on your bill. The quickest, easiest and best way to pay is by direct debit. You can set up and maintain a direct debit for your council tax online using your Salford Customer Account. See www.salford.gov.uk/council-tax or www.salford.gov.uk/rates

How you can contact us:



Online at
www.salford.gov.uk/contacts-email

You can also find more information online at:
www.salford.gov.uk/council-tax
www.salford.gov.uk/rates
www.salford.gov.uk/benefits



Write to:
Customer Services, Civic Centre,
Chorley Road, Swinton M27 5AW.



In person:
Drop in at our gateway centres
www.salford.gov.uk/gateway-centres



By phone:
0161 793 2500

Set up a Salford Customer Account: you can view your council tax account, make a payment, set up a direct debit and view or change your payment plan. It's quicker, easier and better. See www.salford.gov.uk 'My account'

Salford Credit Union

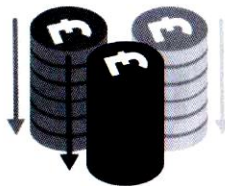
Salford Credit Union exists to provide safe, competitive and fair financial services to anyone that lives in Salford. Your local credit union prides itself on being an ethical, not-for-profit lender and is here to provide safe, competitive and fair financial services to members, providing accessible saving and affordable loans.

The credit union tries to help all members, including those of modest means and those with poor credit scores.

Find out more at www.salfordcreditunion.com

How can you pay less council tax?

You may have to pay the full amount or you may be able to get money off the bill. You also may qualify for support if you are on a low income (Council Tax Reduction). The council tax bill for each band assumes that there are at least two adults living in each property. **If there is only one adult**, you can apply to the council for a discount of 25%. Alternatively, some people are not counted for council tax purposes. These are examples:



- full time students, student nurses, apprentices and youth training trainees
- patients in hospital
- people who are being looked after in care homes
- people who are mentally impaired
- 18 and 19 year olds who are at or who have just left school after completing a qualifying course of education
- care workers working for low pay, usually for charities
- people caring for someone with a disability who is not a spouse, partner or child under 18
- people in prison (except those in prison for the non-payment of council tax or fines)
- spouses of students who are not of British citizenship and who are prevented by the terms of their stay in the UK from taking paid employment or from claiming benefit

For a full list of these people and to apply for a discount or exemption, please visit www.salford.gov.uk/ctaxforms If you would like a hard copy of this list free of charge please let us know.

Other discounts

- You may also be entitled to a disability reduction if you, or someone living with you, are disabled and you need a room, extra bathroom, kitchen or extra space to meet special requirements arising from the disability.
- If you have an annex occupied by family members you may be entitled to a 50% discount

Full details of exemptions and discounts see www.salford.gov.uk/council-tax/reduce-your-bill/

Council Tax Reduction

Council Tax Reduction is support to help you pay your council tax bill. If you qualify you'll get a discount on your bill. We'll look at your income and savings and whether you live alone to calculate whether you can get help and how much you receive.



If you think you should be receiving a reduction but it isn't shown on your bill please contact us to discuss. To make an application see www.salford.gov.uk/ctreduction

If you already receive a reduction you will be aware that there have been annual changes over the last couple of years to the scheme. This year there will not be any changes.

If you have applied for, or currently receive support, then you can view the details on your Salford Customer Account. See above for details of how to register.

Change of circumstances

If you do receive a reduction, discount or exemption but your circumstances change, you must tell us as this may affect the amount you have to pay.

If you do not inform us of any changes you may have to pay a penalty.

Every penny counts towards Salford's services. Please help us prevent fraud by telling us if you have any concerns someone is claiming help who is not entitled to. Visit www.salford.gov.uk/benefits/benefit-fraud

Adult Care funding statement

The Secretary of State for Communities and Local Government has made an offer to adult social care authorities. ("Adult social care authorities" are local authorities which have functions under Part 1 of the Care Act 2014, namely county councils in England, district councils for an area in England for which there is no county council, London borough councils, the Common Council of the City of London and the Council of the Isles of Scilly.)

The offer is the option of an adult social care authority being able to charge an additional "precept" on its council tax for financial years from the financial year beginning in 2016 without holding a referendum, to assist the authority in meeting expenditure on adult social care. Subject to the annual approval of the House of Commons, the Secretary of State intends to offer the option of charging this "precept" at an appropriate level in each financial year up to and including the financial year 2019/20.

