

Document de treball de l'IEB 2015/36

IS THERE REAL FREEDOM OF SCHOOL CHOICE? AN ANALYSIS FROM CHILE

Mauro Mediavilla, Adrián Zancajo

Human Capital

Document de
treball de l'IEB

**IS THERE REAL FREEDOM OF SCHOOL CHOICE?
AN ANALYSIS FROM CHILE**

Mauro Mediavilla, Adrián Zancajo

The **IEB** research group in **Human Capital** aims at promoting research in the Economics of Education. The main objective of this group is to foster research related to the education and training of individuals and to promote the analysis of education systems and policies from an economic perspective. Some topics are particularly relevant: Evaluation of education and training policies; monetary and non-monetary effects of education; analysis of the international assessments of the skills of the young (PISA, PIRLS, TIMMS) and adult populations (PIAAC, IALS); education and equality, considering the inclusion of the disabled in the education system; and lifelong learning. This group puts special emphasis on applied research and on work that sheds light on policy-design issues. Moreover, research focused in Spain is given special consideration. Disseminating research findings to a broader audience is also an aim of the group. This research group enjoys the support from the **IEB-Foundation**.

The **Barcelona Institute of Economics (IEB)** is a research centre at the University of Barcelona (UB) which specializes in the field of applied economics. The **IEB** is a foundation funded by the following institutions: Applus, Abertis, Ajuntament de Barcelona, Diputació de Barcelona, Gas Natural, La Caixa and Universitat de Barcelona.

Postal Address:

Institut d'Economia de Barcelona

Facultat d'Economia i Empresa

Universitat de Barcelona

C/ John M. Keynes, 1-11

(08034) Barcelona, Spain

Tel.: + 34 93 403 46 46

ieb@ub.edu

<http://www.ieb.ub.edu>

The IEB working papers represent ongoing research that is circulated to encourage discussion and has not undergone a peer review process. Any opinions expressed here are those of the author(s) and not those of IEB.

**IS THERE REAL FREEDOM OF SCHOOL CHOICE?
AN ANALYSIS FROM CHILE ***

Mauro Mediavilla, Adrián Zancajo

ABSTRACT: Between 1981 and 1990, Chile began to implement an education reform based on school choice and a financing system through vouchers. In theory, the system ensures complete freedom of choice of school by families. This paper attempts to identify the existence of factors that conditioned the enrolment process in the different types of schools existing nowadays in the Chilean educational system, the largest quasi-market of Latin America. Results show a social stratification and separation by schools and indicate how geographical distance and social composition are the most critical factors for families when choosing a school.

JEL Codes: I21, I28

Keywords: School choice, social class, quasi-markets, voucher, Chile

Mauro Mediavilla
University of Valencia & IEB
Avda Tarongers s/n
46022 Valencia, Spain
E-mail: Mauro.Mediavilla@uv.es

Adrián Zancajo
Autonomous University of Barcelona &
GEPS
08193 Bellaterra (Cerdanyola del Vallès)
Barcelona, Spain
E-mail: adrian.zancajo@gmail.com

* The research presented in this article has been supported by the projects Public-Private Partnerships in Educational Governance: An analysis of its dissemination, implementation and impact in a globalizing world (EDUPARTNER, Ref. GA-2012-322350, EU Programme “PEOPLE”) and The new quasi-markets reforms in education in Latin America. An analysis of policy processes and policy impacts on inequalities and poverty (EDUMERCAL, Ref. CSO2011-22697, Spanish Ministry of Education).

1 Introduction

Between 1981 and 1990, during the military dictatorship, Chile implemented an ambitious education reform based on school choice and a financing system through vouchers (Delannoy, 2000). This reform of the educational system and subsequent reforms were aimed at improving the quality of education through the interaction between free choice for families and competition between schools for students. Parallel to this process, there has been a significant increase of the private sector share in education, especially private subsidised schools.

Although the voucher system is universal, and therefore every family can benefit from it, some studies show that the free school choice policy applied in Chile has resulted in a significant increase in social stratification between schools (Hsieh and Urquiola, 2006; Elacqua, 2012; Mizala and Torche, 2012). Specifically, there is a higher concentration of students from families with low socioeconomic status in public schools than in private schools. This increased separation can be explained by differences in the processes of choosing a school among families, as well as by the strategies developed by educational providers to select their students.

From the perspective of families, the educational policies implemented in Chile have been established assuming symmetric information and that families' school-choices are based on quality criteria. However, several international studies show that the costs of getting quality information are not equal for all families and many of them choose schools not strictly based on criteria linked to their educational quality (Karsten et al., 2001; Ball, 2003, Waslander et al., 2010). In addition, the academic literature shows how, in competitive environments, schools develop strategies to avoid being chosen by certain families while they enhance their opportunities to select the best students (Yair, 1996; Hoadley, 1999; Broccolichi and Van Zanten, 2000).

This paper analyses the factors affecting the choice of different providers by families and the role of provider behaviour in these decisions. The results reveal the importance of social class,

information and family expectations on school choice. This conclusion, like Saporito (2003), Schneider et al. (2006) and Alegre and Ferrer (2010), show a social stratification and separation by schools and indicate how distance and social composition are the most critical factors for families when choosing a school.

The study is divided into five distinct sections. First, we introduce the main features of the Chilean education system, with particular emphasis on the different types of providers and the system characteristics that influence families' choice of schools. Second, we review the literature on the determinants of school choice by families and their consequences in terms of social stratification. Third, we discuss the methodological aspects of our analysis funded on the description of the database and the variables used. Fourth, we present the results obtained based on the types of schools currently available in the Chilean education system. Last, we present our main conclusions.

2 The Chilean Education System

During the 1980s, and in the context of the neoliberal reforms that were carried out in multiple sectors, Chile implemented an educational reform based on school choice and competition between schools. Because of these reforms, the Chilean education system has become the largest quasi-market of Latin America.

These reforms are characterized by the creation of a single system of public financing - voucher system- in which the government pays a fixed amount for each student enrolled in public or subsidized private schools. Moreover, another element that characterizes this model is the decentralization to the local level of the management of public schools (Bellei, 2007). About 90% of Chilean students in primary and secondary schooling have their educations funded through this voucher system (Paredes and Ugarte, 2011). At the same time, families have total freedom of school choice without any type of school zoning system.

Figure 1 shows the evolution of enrolment at all educational levels, except for higher education, by type of school. In the Chilean education system there are four types of schools: municipal public schools administered by local governments; subsidized private schools funded from the voucher system; private schools fully financed by families and, a fourth type established by corporations, which consists of technical secondary schools run privately but publicly funded. Because this study focuses on the primary level, we look at only the first three types.

As can be seen in figure 1, during the 1980s, and as a result of the educational reforms implemented during decade, the percentage of students enrolled in private schools (subsidized and non subsidized) increased dramatically, from 22% in 1981 to 40% in 1990. Moreover, it was beginning in 1999 when enrolment in subsidized private schools increased significantly again. As a result of this process, and based on the data from 2013, there is now a higher percentage of students enrolled in private schools than in public schools.

[Insert figure 1 around here]

Although some reforms have been implemented over the past two decades to increase the resources of the lowest performing schools and aid the most vulnerable students², the essential characteristics of the education system established in the early 1980s have remained intact (OECD, 2004; Hsieh and Urquiola, 2006).

One of the reforms implemented had a direct impact on the school choice process. The Shared Financing law (*Ley de Financiamiento Compartido*), approved in 1993, authorized subsidized private schools to collect a compulsory fee from families in exchange for a discount based on the amount charged in funding received through the public voucher system. Elacqua et al.

² An example of this is the Preferential School Subsidy Act (*Ley de Subvención Escolar Preferencial*) adopted in 2008. It provides for a grant in addition to the regular subsidy received, for the schools that concentrate a larger proportion of vulnerable pupils. These additional funds are linked to the development of a plan to improve the school and an increase in national assessment results in educational performance.

(2013) argue that this policy increased separation because it encouraged segmentation within the subsidized private sector.

Regarding the information made available to families, it should be noted that the results of the national evaluation of schools are published annually and made available to families so that they know the average performance level of all schools. This information is widespread through many different ways. Every year all families received a report about the performance of the school where the children are attending and the performance of the rest of the schools of the municipality. At the same time, this information is available on Internet. About the possible asymmetries of information between rich and poor families, Zancajo et al. (2014) have shown how the majority of families know the performance of the school where they are attending and the differences between social groups consists in the importance of this information during the process of school choice.

3 Educational Quasi-Markets and School Choice

Academic freedom and with it, the choice of school, have emerged as unifying principles of the Chilean educational system from the 1980s. Proponents of school choice policies argue that a greater choice capacity among families increases competition among schools and generates efficiency improvements in the overall system. They also argue that students from low-income families will benefit from the opportunity to attend higher quality schools (Chubb and Moe, 1990; Hoxby, 2000; among others).

However, opponents of school choice have warned that such policies may intensify the processes of stratification and separation between schools. These negative effects may be explained by supply and demand behaviour in the context of educational quasi-markets (Saporito, 2003; Alegre and Ferrer, 2010; Waslander et al., 2010). From this perspective, several studies have revealed differences in the way families collect and use information, a key element in the process of school choice, and related to their socioeconomic status (Schneider et

al., 2000; Karsten et al., 2001; Ball, 2003). They also highlight the use of criteria in school choice among families that are not strictly related to the quality of schools (Elacqua et al., 2006; Härmä, 2009). In many cases, factors such as the social composition of the school and its distance from home may help explain families' final choices and be of greater importance than indicators that may be more directly related to the educational quality of schools. Results from Hastings et al. (2005) show how the families' preferences vary according to their socioeconomic status. Families who value academic criteria are more likely to be enrolled in high performing schools while the families enrolled in low performing schools value lesser extent academic aspects.

The empirical evidence for the Chilean case confirms these patterns. Schneider et al. (2006) show how distance and social composition are the most critical factors for families when select a school. This same study shows that choosing based on strict criteria of quality of schools is much more common among families with greater educational capital. Moreover, it also shows that one of the effects of educational reform in Chile has been the exodus of middle-class students from public schools, therefore increasing the concentration of students from low socioeconomic backgrounds in these schools (Hsieh and Urquiola, 2006). In this sense, Chumacero et al. (2011) show how low-income and less educated families have high probabilities to choose the nearest school to their home. In contrast, Gallego and Hernando (2009) don't find income and education level of family as a determinants of choice. For these authors higher educational expectation of parents about their children reduces the effect of distance and price in the process of choice.

A selection process carried out by schools is another element that directly influences family choice. A study by Contreras, Sepúlveda and Bustos (2010) based on 2005 data, reveals that 30% of students had to pass some kind of selection process, one mainly based on academic ability. These selection processes were much more frequent in subsidized private schools (55%) than public schools (6%). The authors identify two effects caused by the selection process: one,

a direct effect, as it permits schools to select students that are less costly to educate and, two, an indirect effect, as it impacts on the social composition of the school.

These selection processes enable a school to "improve its market position without improving the quality of its educational services" (Bellei, 2007:28). Therefore, and according to this author, the competition between schools is focused on attracting the best students and not on improving educational quality. In this regard, the study by Contreras et al. (2010) shows how these selection processes directly affect the average performance of the schools that use them.

Finally, another factor that can influence school choice is the level and type of school (public, private and subsidized private) available nearby. Elacqua et al. (2012) show that the majority of students attending a low-performing school have no school of higher quality nearby. They add that in cases where alternatives do exist, they are not accessible to all families, due to the existence of selection processes and/or monthly fees. In this sense, Hastings and Weinstein (2007) show how even with high levels of information of school performance is most probably for parents to choose a high-performance school if these schools are closed to their homes.

4 Descriptive Analysis

The data used in this paper comes from the Education Quality Measurement System (SIMCE³). This educational assessment is administered annually to students in different grades of the Chilean education system. Specifically, the 4th grade students are tested annually while the 8th and 10th grade are evaluated every two years. These tests analyse various competencies, including reading or math, and a family context questionnaire is also administered.

In this paper we used the data from 2011. We have selected students from 4th grade, which corresponds to those students whose families most have recently undergone the process of

³ SIMCE: System to Measure the Quality of Education (*Sistema de Medición de la Calidad de la Educación*).

choosing a school. The initial sample included 230,911 observations, 10,806 of which were deleted because school or family information was missing.

All the variables that could be considered, based on the theoretical background and empirical evidence, as potential determinants of school choice were selected (see table 1). First, and as a principal and dependent variable of analysis, is the type of school. In the case of the Chilean education system, there are three types: public, subsidized private, and private.

[Insert table 1 around here]

Second, are variables related to school characteristics: location (urban or rural), number of schools by municipality and access requirements. This last variable is constructed based on the answers families give to different questions regarding the selection process in the context questionnaire. Two of the possible answers were considered as revealing potential requirements of selection: providing a certificate of family income and passing an entrance exam.

Third, the level of family information about the school. This variable was constructed taking into account if the family knows the pedagogical project, the pedagogical objectives and the codes of conduct of the school. Fourth, the information about the educational expectations of students' families and the reasons expressed for school choice.

Four, we constructed a variable related to the family background: an index of socioeconomic status (SES). This variable was constructed based on four variables included in the database: level of family income, father's education, mother's education, and number of books at home. The weight of each variable in constructing the index was calculated using categorical principal component analysis method (Jolliffe, 2002; Shaw, 2003). The level of missing values for these variables was: family income (9.4%), father's education (13.7%), mother's education (9.9%), and number of books at home (9.4%). The observations with two or more missing variables

were deleted and in the other cases, the values were imputed using linear regressions for metric variables and logistic regressions in the case of categorical variables (OECD, 2008). Finally, other variables were constructed: student gender and continuity at the same school between preschool and primary. Additionally, we add the grade retention as a control variable.

The descriptive results indicate the importance of private schools in the Chilean education system. Sixty percent of all students are enrolled in private schools and 52% specifically in subsidized private schools. Another important characteristic of the Chilean education system is the low level of students who attend to schools in rural areas; only 11% of students are enrolled in a school situated in these areas. School supply statistics show the enormous disparities across the country resulting from the uneven concentration of the population. While on average, in each commune (municipality) families have approximately 50 schools available to choose from, this is not the real situation, as there is wide geographic variability ranging from having just one school available to having more than one hundred. This situation can be observed seeing the histogram in figure 2. In addition, the sample does not take into account small municipalities without schools in their territory. In the case of access requirements, results show how 36% of schools request a prior exam or a certificate of family income as a condition for enrolment.

[Insert figure 2 around here]

Regarding families, the information they have about the school and their expectations regarding the educational attainment of their members is relatively high, although with high variability at the same time. In addition, there are multiple reasons given as first reason for school choice. This issue is analysed separately in the second part of this paper. There are no differences in enrolment by gender. Around 50% of the students have moved from the school where they were enrolled during preschool. Finally, 12% of students in the sample have repeated one or more courses.

Table 2 shows the distribution of the students in the three types of schools by school location (rural and school supply), access requirements, family characteristics (information about the school, educational expectations and SES), and the individual characteristics of the student (gender and continuity at the same school).

[Insert table 2 around here]

First, the results show that public education provides a monopoly service in rural areas, where the dynamics of the education market seem not to have penetrated. Of the students who attend rural schools the 74.77% go to public schools. This percentage indicates an overrepresentation of this type of school. By contrast, in this area private schools have a limited presence.

At the same time, the density of schools by municipality shows another reality regarding the spatial distribution of schools in Chile. While the public schools are distributed priority in areas with low educational supply, subsidized private schools are relatively more implanted in zones with high supply. Finally, the fully private schools are more concentrated in medium supply areas.

Second, the analysis of access requirements shows very different results depending on type of school. While the total number of students admitted to the school without any requirement has a distribution mainly focuses in public schools, when there is any access requirements (medium or high) clearly most are located in private schools. In particular, it draws attention the existence of greater requirements for subsidized private schools.

Third, we find that families have a high level of knowledge regarding certain of the aspects central to schools' educational policy. In this context, families that send their kids to fully private schools show greater knowledge, followed by parents who send their kids to subsidized private and public schools. Clearly, the families with minor information about the school have a

major presence in the public school. At the same time, family educational expectations regarding children are higher at private schools in comparison with subsidized private and public schools.

Four, the results observed for the crossing between SES and school typology show that a higher percentage of students from families with the lowest levels of SES (SES1 and SES2) attend public schools, while a higher percentage of students from families with medium levels of SES (SES3 and SES4) attend subsidized private schools. Students from the families with the highest level of SES (SES5) are almost exclusively enrolled in private schools.

Finally, the data on students' characteristics (gender and continuity) not show big differences between types of schools.

Table 3 shows the distribution of the reasons given for school choice by type of school. The different responses are sorted by their weight in the total percentage. First, the proximity of the school to the student's home has been the main reason for choice of school for almost 40% of the total. At the same time, the distribution by school type indicates that the vast majority of students whose families give this as their main reason for choice are enrolled in public schools.

The second most frequent reason given is school educational excellence (16% of the total). This aspect is very important to the families who choose to educate their children in private schools. It should be noted that while information regarding school quality as indicated by student test scores on standardized tests is fully public and accessible to the entire population, there might be problems of asymmetric information between families.

The third most common reason given for choosing a school (accounting for 13% of respondents) is religious orientation. Here we must note that this was the main reason given by families choosing to enrol their children in private schools. Lastly, while it was mentioned by

less than 7% of the total, we want emphasize the importance of order and discipline at the school for families who choose to enrol their children in subsidized private schools.

[Insert table 3 around here]

5 Results

From the sample selection described above, and given the unordered characteristics of the response variable, we estimate the following multinomial logistic model in order to know the main determinants of school choice:

$$\log \frac{\Pr(Y=j)}{\Pr(Y=j')} = \alpha + \beta_1 X_1 + \beta_2 X_2 + \dots + \beta_k X_k,$$

where there are j categories of the response variable. The model consists of $j-1$ logit equations, which are fit simultaneously. Multinomial logistic regression allows each category to be compared to a reference category, providing a number of logistic regression models (Long and Freese, 2006; Zelterman, 2006). Table 4 shows the results obtained.

First, rural context is an element that negatively affects the likelihood of attending a private school. This is the logical consequence of, as mentioned above, the existence of only public schools in certain geographic areas.

Secondly, the variable indicating the density of the supply presents an interesting result because it incorporates school location. The probability of attending a public school decreases as the total supply increases. Therefore, and in line with the findings regarding rural context, public schools are more prevalent in sparsely populated areas. A higher density increases the likelihood of attending to the subsidized private schools. In the case of private non-subsidized schools, their preference to settle in communities with an average density of schools is clear.

[Insert table 4 around here]

Third, access requirements (prior examination and /or certificate of family income) are revealed useful resources for selecting students in the case of subsidized private schools, especially when both requirements are necessary to be considered for enrolment. At the same time, the weight of these access requirements is lower at fully private schools (in the case of the two requirements being simultaneously requested). This fact could indicate that the subsidized private schools, free to set their fees for attendance, use this mechanism as a means for student selection and have no need to use other means.

Fourth, the degree of family information regarding the school the student attends corresponds to an increase in the probability of attending a private school. This trend is accentuated in the case of fully private schools. This result can be explained by the existence of greater diversity in the case of private schools and, therefore, the need for families to make greater efforts to obtain information about these schools. However, it also reveals that the families of middle and upper class students, very present in the private sector, are more likely to seek information on the quality of schools, either through SIMCE data, information offered by the schools themselves, or through private networks.

Fifth, the expectations of the family regarding the highest educational level that the student can achieve have a direct relationship with the probability of choosing a private school and, especially the fully private school.

Sixth, regarding the probability of families indicating a specific "main reason for choice of school" we find the following results: for families that enrol their children in public schools, being the only school in the municipality is the most prominent reason for this choice. In addition, other reasons that increase the likelihood of a student enrolling in public school are, in

order of importance, cost, that it is the only one that accepts the student, and proximity to home. All the above aspects have no relation with elements of educational quality. Regarding subsidized private schools, several factors share importance in families' decisions. Here we find religious orientation, order and discipline in the school and the quality of the facilities are the more relevant aspects. In the case of non-subsidized private schools, emphasize is placed on bilingualism and to a lesser extent, values. We can infer that bilingualism reflects other important factors for the families of potential students, such as academic excellence, facilities and discipline.

Seventh, the synthetic indicator for socioeconomic status (SES) shows an inverse relationship with the probability of attending a public school. Therefore, it is clear that this variable is a central element when families choose the school where their children will go. In the case of private schools the odds ratio indicates that the higher the student's SES, the more likely he/she is to attend this type of school. Specifically in the category SES5, the probability of attending a fully private school is huge.

Eighth, the likelihood related to continuity (defined as staying at the same school from pre-school to primary) is higher in the case of fully private school in comparison of the public school. In contrast, it is a negative for enrolment in subsidized private schools. Gender is not a decisive aspect.

Finally, as for the robustness of the regression, the sample size and the percentage of correct predictions of the estimated model (more than 70%) is considered in the literature to be a relatively high degree of reliability.

6 Conclusions

This paper has analysed the factors that affect families' choice of school and the role of provider behaviour in that choice. To do this we used the System for Measuring the Quality of Education (SIMCE) database for 4th grade students for year 2011.

The initial descriptive analysis yielded information on the wide participation of private schools, which account for 60 % of the students enrolled in the Chilean educational system in a context of significant socioeconomic differences among the potential users of the three types of existing schools. In terms of demand, significant differences were observed when analysing enrolment by social class for each school type and we found clear differential characteristics regarding families' primary motivation for school choice.

The regression results reveal the importance of social class, information and family expectations on school choice. In addition, consistent with what we observed in the bivariate analysis, it was possible to establish the existence of differences in terms of the geographic location of the schools and the access requirements requested. Moreover, and about the main reason for school choice expressed by the families, there is a clear relationship between the types of school and the general economic situation of the family. Lastly, we find that gender is not a factor in the choice of school, and retention has a different impact between the two private school typologies. This conclusion, like Saporito (2003), Schneider et al. (2006) and Alegre and Ferrer (2010), show a social stratification and separation by schools and indicate how distance and social composition are the most critical factors for families when choosing a school.

Overall, the descriptive analysis and the subsequent regressions show how school choice is strongly influenced by families' socioeconomic characteristics. This relationship can be explained by the existing asymmetry in the information available to families. In this sense, further research would be necessary to expand the evidence regarding the costs of obtaining

information by family socioeconomic level and how these potential costs influence the different criteria used in the school choice process.

One of the least explored areas in both the Chilean context and internationally is the effect of the strategies developed by educational providers to affect the school choice process. The selection of students or the concentration of school supply in specific areas can have a decisive influence on the election process. Analysis of these conditions is of interest not only from the point of view of access. The results of school choice have important effects on equity and the efficiency of the system through separation and peer effects that may occur. The governments should consider these consequences in the moment to design the system of financing education.

Finally, it is important to note that data available presents some limitations. On one hand, some of the variables used as predictors are collected after the process of school choice. This is the case of the level of information that family has about the school, educational expectations regarding the maximum educational level that can be achieved by the students and the reasons for school choice. Because of the above must be some caution when interpreting the results.

7 References

- Alegre, M. and Ferrer, G. (2010). School regimes and education equity: some insights based on PISA 2006. *British Educational Research Journal*, 36 (3), 433 – 461.
- Ball, S. (2003). *Class strategies and the education market: the middle classes and social advantage*. London: Routledge Falmer.
- Bellei, C. (2007). The Private-Public School Controversy. The case of Chile. In: Rajashri, C. and Peterson, P.E (Eds.), *School Choice International: Exploring Public-Private Partnerships*. (165-192) Cambridge, Massachusetts: MIT Press.
- Broccolichi, S. and Van Zanten, A. (2000). School competition and pupil flight in the urban periphery. *Journal of Education Policy*, 15 (1), 51-60.
- Chubb, J. and Moe, T. (1990). *Politics, Markets & America's Schools*. Washington, DC: The Brookings Institution.
- Chumacero, R., Gómez, D. and Paredes, R. (2011). I would walk 500 miles (if it paid): Vouchers and school choice in Chile. *Economics of Education Review*, 30, 1103-1114.

- Contreras, D., Sepúlveda, P. and Bustos, S. (2010). When Schools Are the Ones that Choose: The Effects of Screening in Chile. *Social Science Quarterly*, 91 (5), 1349 – 1368.
- Delannoy, F. (2000). *Education Reforms in Chile, 1980-1998: A Lesson in Pragmatism*. Education Reform and Management Publications Series, 1 (1).
- Elacqua, G., Schneider, M. and Buckley, J. (2006). School choice in Chile: Is it Class or the Classroom? *Journal of Policy Analysis and Management*, 25 (3), 577 – 601.
- Elacqua, G. (2012). The impact of school choice and public policy on segregation: Evidence from Chile. *International Journal of Educational Development*, 32, 444–453.
- Elacqua, G., Martínez, M.; Santos, H. and Urbina, D. (2012). School closures in Chile: Access to quality alternatives in a school choice system. *Estudios de Economía*, 39 (2), 179 – 202.
- Elacqua, G., Montt, P. and Santos, H. (2013). Evidencias para eliminar –gradualmente- el Financiamiento Compartido. *Instituto de Políticas Públicas UDP*, 14.
- Gallego, F. and Hernando, A. (2009). School Choice in Chile: Looking at the Demand Side. Pontificia Universidad Católica de Chile. Instituto de Economía. *Documento de Trabajo*, 356.
- Härmä, J. (2009). Can choice promote education for all? Evidence from growth in private primary schooling in India. *Compare: A Journal of Comparative and International Education*, 39 (2), 151–165.
- Hastings, J., Kane, T. and Staiger, D. (2005). Parental preferences and school choice competition: Evidence from public school choice program. *NBER Working Papers Series*, 11805.
- Hastings, J. and Weinstein, J. (2007). Information, School Choice, and Academic Achievement: Evidence from two experiments. *NBER Working Papers*, 13623.
- Hsieh, C-T. and Urquiola, M. (2006). The effects of generalized school choice on achievement and stratification: Evidence from Chile's voucher program. *Journal of Public Economics*, 90, 1477– 1503.
- Hoadley, U. (1999). School choice in a South African working class context. In: L. Chisholm, (Ed.), *Critical perspectives in South African education: Reconstituting the educational realm'*, (28-44). Cape Town: Juta.
- Hoxby, C. (2000). Does competition among public schools benefit students and taxpayers? *American Economic Review*, 90, 1209–1238.
- Jolliffe, I. (2002). *Principal Component Analysis*. 2nd ed. New York: Springer Series in Statistics.
- Karsten, S., Visscher, A. and De Jong, T. (2001). Another side of the Coin: the unintended effects of publication of school performance data in England and France. *Comparative Education*, 37 (2), 231-242.
- Long, J. and Freese, J. (2006). *Regression Models for Categorical Dependent Variables using STATA*. Texas: Stata Press.

Mizala, A., and F. Torche. (2012). Bringing the schools back in: the stratification of educational achievement in the Chilean voucher system. *International Journal of Educational Development*, 32, 132–144

OECD (2004). *Reviews of National Policies for Education*. Chile. Paris: OECD Publications

OECD (2008). *Handbook on Constructing Composite Indicators. Methodology and User Guide*. Paris: OECD Publications.

Paredes, R. and Ugarte, G. (2011). Should Students Be Allowed to Miss? *The Journal of Educational Research*, 104 (3), 194-201.

Saporito, S. (2003). Private Choices, Public Consequences: Magnet School Choice and Segregation by Race and Poverty. *Social Problems*, 50 (2), 181 – 203.

Schneider, M., Teske, P. and Marschall, M. (2000). *Choosing Schools. Consumer Choice and the Quality of American Schools*. Oxfordshire: Princeton University Press.

Schneider, M., Elacqua, G. and Buckley, J. (2006). School choice in Chile: Is it class or the classroom? *Journal of Policy Analysis and Management*, 25(3), 577 – 601.

Shaw, P. (2003) *Multivariate Statistics for the Environmental Sciences*. London: Hodder-Arnold.

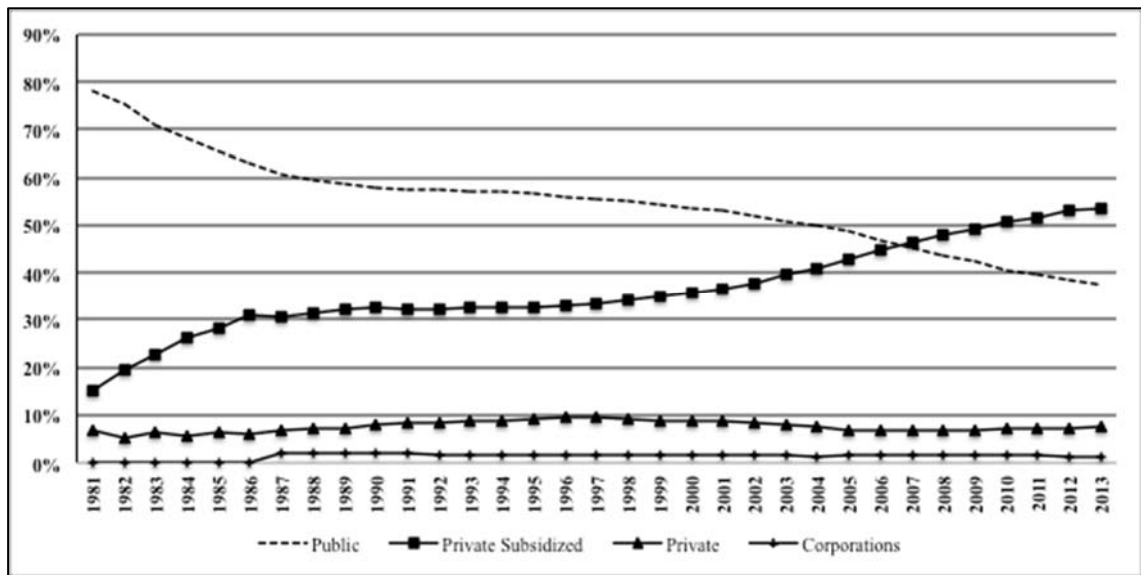
Waslander, S., Pater, C. and Van der Weide, M. (2010). Markets in Education: An Analytical Review of Empirical Research on Market Mechanisms in Education. *OECD Education Working Papers*, 52.

Yair, G. (1996). School Organization and Market Ecology: A Realistic Sociological Look at the Infrastructure of School Choice. *British Journal of Sociology of Education*, 17(4), 453-471.

Zancajo, A.; Bonal, X. and Verger, A. (2014). Mercados educativos y segmentación de la oferta escolar: efectos sobre las desigualdades educativas en Chile. *Témpora Revista de historia y sociología de la educación*, 17.

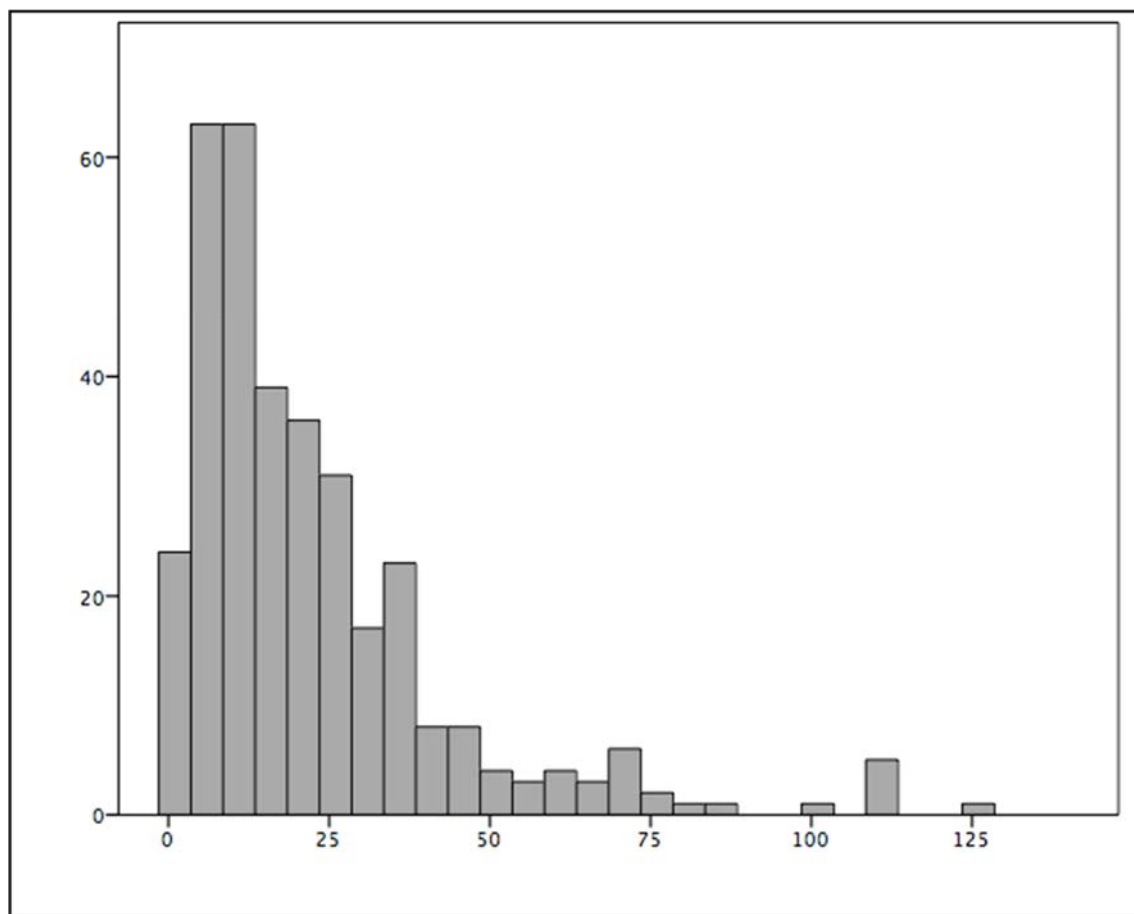
Zelterman, D. (2006). *Models for Discrete Data*. Oxford: Oxford University Press.

Figure 1. Evolution of enrolment throughout the Chilean education system by type of school (primary and secondary education). Period 1981 – 2013.



Source: Compiled from the Chilean Ministry of Education.

Figure 2. Histogram of municipalities by school supply



Source: Authors from SIMCE 2011.

Table 1. Description of variables

Type of variable	Description	N	Mean	Stand. deviation	Min	Max
Type of school	Public	220105	0.40	0.489	0	1
	Subsidized private	220105	0.52	0.499	0	1
	Private	220105	0.08	0.269	0	1
Rural	<i>Dummy</i> . Value 1 if school is located in a rural area.	220105	0.11	0.312	0	1
School supply	Number of schools in municipality.	220105	50.91	32.51	1	128
Access requirements	Indicates the existence of previous requirements of access to the school. Elements considered as requirements are: prior exam or certificate of family income.	213141	0.36	0.534	0	2
School information	Indicates the level of information the family has about the school pedagogical project, the educational objectives and school rules.	205661	2.39	0.871	0	3
Educational expectations ^a	Indicates family expectations regarding the maximum educational level that can be achieved by the student.	202543	2.95	0.607	1	4
Reasons for school choice	Indicates the main reason for school choice.	197508	4.49	3.894	1	13
SES	Socioeconomic status. Index based on family income, educational level of parents and books at home. This index has been recoded into five quintiles.	209703	2.99	1.413	1	5
Gender	<i>Dummy</i> . Value 1 for women.	220105	0.49	0.499	0	1
Continuity	<i>Dummy</i> Value 1 if student is enrolled at the same school where he was enrolled during the pre-school.	208032	0.49	0.497	0	1
Retention	<i>Dummy</i> . Value 1 if the students has repeated course.	209307	0.12	0.333	0	1

^a The variable expectations has 4 categories: 1 (less than secondary education), 2 (secondary education) 3 (higher education), 4 (postgraduate).

Table 2. Descriptive analysis by school typology (in %)

		Public	Subsidized private	Private
Rural		74.77	23.93	1.30
School supply ^a	Low	51.58	42.66	5.75
	Medium	35.12	54.17	10.71
	High	32.52	60.49	6.98
Access requirements ^c	Null	53.60	41.87	4.53
	Medium	13.10	73.15	13.75
	High	5.36	85.82	8.82
School information ^b	Null	56.73	41.02	2.25
	Low	47.33	49.17	3.50
	Medium	43.03	52.29	4.68
	High	34.69	55.32	9.99
Educ. expectations	Low	71.40	28.43	0.17
	Medium	62.91	36.98	0.10
	Medium-high	38.75	57.09	4.16
	High	15.89	52.57	31.54
SES	1	67.66	32.33	0.01
	2	54.09	45.85	0.16
	3	40.88	58.89	0.23
	4	28.12	70.38	1.49
	5	9.74	55.61	34.66
Gender	Women	34.36	52.91	7.73
	Man	39.88	52.19	7.92
Continuity	Yes	37.90	56.75	5.35
	No	40.91	49.31	9.79
Total		39.62	52.55	7.83

Source: Authors from SIMCE 2011. ^a Low: 1-30 schools by commune; Medium: 31-61 schools; High: 62-128 schools. Each category with 33% of the share in the survey. ^b The variable has been constructed based on knowledge of the school pedagogical project, educational objectives and school rules. ^c The requirements considered have been previous exam and certificate of family income. Null: no requirements, Medium: one requirement; High: two requirements. The sum of each row is 100%.

Table 3. Descriptive analysis by school typology (in %)

Reasons for school choice	Public	Subsidized private	Private	% of total
Proximity	54.40	43.26	2.34	40.40
Excellence	26.43	62.01	11.56	15.70
Religious orientation	5.82	75.77	18.40	12.59
Order and discipline	29.83	67.43	2.75	6.34
Siblings at school	37.41	52.98	9.60	6.05
School climate	36.25	55.07	8.68	3.72
Facilities	31.94	61.46	6.60	3.43
Other options	37.41	52.13	10.46	11.77
Total	39.62	52.55	7.83	

Source: Authors from SIMCE 2011. The sum of each row is 100%.

Table 4. Multinomial logistic regression results

		Base Outcome: Public	
		Subsidized private	Private
Rural		0.4103 (0.0088)	0.5112 (0.0439)
School supply	Low	Reference category	
	Medium	1.3924 (0.0211)	1.6403 (0.0535)
	High	1.4952 (0.0288)	0.9611 (0.0323)
Access requirements	Null	Reference category	
	Medium	4.5726 (0.0709)	5.9303 (0.1666)
	High	12.8811 (0.8961)	8.2501 (0.7550)
School information	Null	Reference category	
	Low	1.2261 (0.0423)	1.3865 (0.1550)
	Medium	1.3210 (0.0449)	1.8896 (0.2072)
	High	1.4598 (0.0472)	3.1256 (0.3306)
Expectations	Low	Reference category	
	Medium	1.0484 (0.0613)	0.5178 (0.3057)
	Medium-High	1.2478 (0.0720)	1.6162 (0.8929)
	High	1.4300 (0.0881)	4.7017 (2.5992)
Choice reasons	Others	Reference category	
	Proximity	0.8121 (0.0240)	0.4359 (0.0256)
	Excellence	1.1738 (0.0379)	0.9278 (0.0532)
	Values / Religion	7.9844 (0.3325)	8.7940 (0.5567)
	Order and discipline	1.8293 (0.0671)	0.6615 (0.0567)
	Siblings at school	1.0559 (0.0389)	0.9716 (0.0665)
	School climate	1.2156 (0.0504)	1.1254 (0.0882)
	Facilities	1.4639 (0.0618)	1.2125 (0.1028)
	Friends at school	1.2681 (0.0710)	0.7317 (0.1034)
	Economic	0.7111 (0.0317)	0.1981 (0.0312)
	Only one school in municipality	0.1458 (0.0140)	0.0774 (0.0229)
	Only one school which accepts the student	0.7751 (0.0608)	0.8445 (0.1429)

	Bilingual	1.3110 (0.0822)	6.3510 (0.5712)
SES	1	Reference category	
	2	1.2493 (0.0241)	3.0175 (1.6625)
	3	1.6772 (0.0329)	10.6657 (5.4791)
	4	2.4900 (0.0521)	78.3014 (39.4332)
	5	4.7124 (0.1249)	3061.945 (1537.693)
Female		0.9848 (0.0121)	0.9229 (0.0233)
Continuity		0.8302 (0.0104)	1.7684 (0.0466)
Control variable (Grade retention)		SI	SI
N		171.355	
Log-Likelihood		-103706.82	
Prob > chi2		0.0000	

Coefficient values: *odds ratios*. In brackets: standard error. Bold: significant values (95%). Correctly predicted probabilities: 70.39 %.

2011

- 2011/1, **Oppedisano, V; Turati, G.:** "What are the causes of educational inequalities and of their evolution over time in Europe? Evidence from PISA"
- 2011/2, **Dahlberg, M; Edmark, K; Lundqvist, H.:** "Ethnic diversity and preferences for redistribution"
- 2011/3, **Canova, L.; Vaglio, A.:** "Why do educated mothers matter? A model of parental help"
- 2011/4, **Delgado, F.J.; Lago-Peñas, S.; Mayor, M.:** "On the determinants of local tax rates: new evidence from Spain"
- 2011/5, **Piolatto, A.; Schuett, F.:** "A model of music piracy with popularity-dependent copying costs"
- 2011/6, **Duch, N.; García-Estévez, J.; Parellada, M.:** "Universities and regional economic growth in Spanish regions"
- 2011/7, **Duch, N.; García-Estévez, J.:** "Do universities affect firms' location decisions? Evidence from Spain"
- 2011/8, **Dahlberg, M.; Mörk, E.:** "Is there an election cycle in public employment? Separating time effects from election year effects"
- 2011/9, **Costas-Pérez, E.; Solé-Ollé, A.; Sorribas-Navarro, P.:** "Corruption scandals, press reporting, and accountability. Evidence from Spanish mayors"
- 2011/10, **Choi, A.; Calero, J.; Escardíbul, J.O.:** "Hell to touch the sky? Private tutoring and academic achievement in Korea"
- 2011/11, **Mira Godinho, M.; Cartaxo, R.:** "University patenting, licensing and technology transfer: how organizational context and available resources determine performance"
- 2011/12, **Duch-Brown, N.; García-Quevedo, J.; Montolio, D.:** "The link between public support and private R&D effort: What is the optimal subsidy?"
- 2011/13, **Breuilé, M.L.; Duran-Vigeneron, P.; Samson, A.L.:** "To assemble to resemble? A study of tax disparities among French municipalities"
- 2011/14, **McCann, P.; Ortega-Argilés, R.:** "Smart specialisation, regional growth and applications to EU cohesion policy"
- 2011/15, **Montolio, D.; Trillas, F.:** "Regulatory federalism and industrial policy in broadband telecommunications"
- 2011/16, **Pelegrín, A.; Bolancé, C.:** "Offshoring and company characteristics: some evidence from the analysis of Spanish firm data"
- 2011/17, **Lin, C.:** "Give me your wired and your highly skilled: measuring the impact of immigration policy on employers and shareholders"
- 2011/18, **Bianchini, L.; Revelli, F.:** "Green politics: urban environmental performance and government popularity"
- 2011/19, **López Real, J.:** "Family reunification or point-based immigration system? The case of the U.S. and Mexico"
- 2011/20, **Bogliacino, F.; Piva, M.; Vivarelli, M.:** "The impact of R&D on employment in Europe: a firm-level analysis"
- 2011/21, **Tonello, M.:** "Mechanisms of peer interactions between native and non-native students: rejection or integration?"
- 2011/22, **García-Quevedo, J.; Mas-Verdú, F.; Montolio, D.:** "What type of innovative firms acquire knowledge intensive services and from which suppliers?"
- 2011/23, **Banal-Estañol, A.; Macho-Stadler, I.; Pérez-Castrillo, D.:** "Research output from university-industry collaborative projects"
- 2011/24, **Lighthart, J.E.; Van Oudheusden, P.:** "In government we trust: the role of fiscal decentralization"
- 2011/25, **Mongrain, S.; Wilson, J.D.:** "Tax competition with heterogeneous capital mobility"
- 2011/26, **Caruso, R.; Costa, J.; Ricciuti, R.:** "The probability of military rule in Africa, 1970-2007"
- 2011/27, **Solé-Ollé, A.; Viladecans-Marsal, E.:** "Local spending and the housing boom"
- 2011/28, **Simón, H.; Ramos, R.; Sanromá, E.:** "Occupational mobility of immigrants in a low skilled economy. The Spanish case"
- 2011/29, **Piolatto, A.; Trotin, G.:** "Optimal tax enforcement under prospect theory"
- 2011/30, **Montolio, D.; Piolatto, A.:** "Financing public education when altruistic agents have retirement concerns"
- 2011/31, **García-Quevedo, J.; Pellegrino, G.; Vivarelli, M.:** "The determinants of YICs' R&D activity"
- 2011/32, **Goodspeed, T.J.:** "Corruption, accountability, and decentralization: theory and evidence from Mexico"
- 2011/33, **Pedraja, F.; Cordero, J.M.:** "Analysis of alternative proposals to reform the Spanish intergovernmental transfer system for municipalities"
- 2011/34, **Jofre-Monseny, J.; Sorribas-Navarro, P.; Vázquez-Grenno, J.:** "Welfare spending and ethnic heterogeneity: evidence from a massive immigration wave"
- 2011/35, **Lyytikäinen, T.:** "Tax competition among local governments: evidence from a property tax reform in Finland"
- 2011/36, **Brühlhart, M.; Schmidheiny, K.:** "Estimating the Rivalness of State-Level Inward FDI"
- 2011/37, **García-Pérez, J.I.; Hidalgo-Hidalgo, M.; Robles-Zurita, J.A.:** "Does grade retention affect achievement? Some evidence from Pisa"
- 2011/38, **Boffa, f.; Panzar, J.:** "Bottleneck co-ownership as a regulatory alternative"

- 2011/39, **González-Val, R.; Olmo, J.:** "Growth in a cross-section of cities: location, increasing returns or random growth?"
- 2011/40, **Anesi, V.; De Donder, P.:** "Voting under the threat of secession: accommodation vs. repression"
- 2011/41, **Di Pietro, G.; Mora, T.:** "The effect of the l'Aquila earthquake on labour market outcomes"
- 2011/42, **Brueckner, J.K.; Neumark, D.:** "Beaches, sunshine, and public-sector pay: theory and evidence on amenities and rent extraction by government workers"
- 2011/43, **Cortés, D.:** "Decentralization of government and contracting with the private sector"
- 2011/44, **Turati, G.; Montolio, D.; Piacenza, M.:** "Fiscal decentralisation, private school funding, and students' achievements. A tale from two Roman catholic countries"

2012

- 2012/1, **Montolio, D.; Trujillo, E.:** "What drives investment in telecommunications? The role of regulation, firms' internationalization and market knowledge"
- 2012/2, **Giesen, K.; Suedekum, J.:** "The size distribution across all "cities": a unifying approach"
- 2012/3, **Foremny, D.; Riedel, N.:** "Business taxes and the electoral cycle"
- 2012/4, **García-Estévez, J.; Duch-Brown, N.:** "Student graduation: to what extent does university expenditure matter?"
- 2012/5, **Durán-Cabré, J.M.; Esteller-Moré, A.; Salvadori, L.:** "Empirical evidence on horizontal competition in tax enforcement"
- 2012/6, **Pickering, A.C.; Rockey, J.:** "Ideology and the growth of US state government"
- 2012/7, **Vergolini, L.; Zanini, N.:** "How does aid matter? The effect of financial aid on university enrolment decisions"
- 2012/8, **Backus, P.:** "Gibrat's law and legacy for non-profit organisations: a non-parametric analysis"
- 2012/9, **Jofre-Monseny, J.; Marín-López, R.; Viladecans-Marsal, E.:** "What underlies localization and urbanization economies? Evidence from the location of new firms"
- 2012/10, **Mantovani, A.; Vandekerckhove, J.:** "The strategic interplay between bundling and merging in complementary markets"
- 2012/11, **García-López, M.A.:** "Urban spatial structure, suburbanization and transportation in Barcelona"
- 2012/12, **Revelli, F.:** "Business taxation and economic performance in hierarchical government structures"
- 2012/13, **Arqué-Castells, P.; Mohnen, P.:** "Sunk costs, extensive R&D subsidies and permanent inducement effects"
- 2012/14, **Boffa, F.; Piolatto, A.; Ponzetto, G.:** "Centralization and accountability: theory and evidence from the Clean Air Act"
- 2012/15, **Cheshire, P.C.; Hilber, C.A.L.; Kaplanis, I.:** "Land use regulation and productivity – land matters: evidence from a UK supermarket chain"
- 2012/16, **Choi, A.; Calero, J.:** "The contribution of the disabled to the attainment of the Europe 2020 strategy headline targets"
- 2012/17, **Silva, J.I.; Vázquez-Grenno, J.:** "The ins and outs of unemployment in a two-tier labor market"
- 2012/18, **González-Val, R.; Lanaspa, L.; Sanz, F.:** "New evidence on Gibrat's law for cities"
- 2012/19, **Vázquez-Grenno, J.:** "Job search methods in times of crisis: native and immigrant strategies in Spain"
- 2012/20, **Lessmann, C.:** "Regional inequality and decentralization – an empirical analysis"
- 2012/21, **Nuevo-Chiquero, A.:** "Trends in shotgun marriages: the pill, the will or the cost?"
- 2012/22, **Piil Damm, A.:** "Neighborhood quality and labor market outcomes: evidence from quasi-random neighborhood assignment of immigrants"
- 2012/23, **Ploeckl, F.:** "Space, settlements, towns: the influence of geography and market access on settlement distribution and urbanization"
- 2012/24, **Algan, Y.; Hémet, C.; Laitin, D.:** "Diversity and local public goods: a natural experiment with exogenous residential allocation"
- 2012/25, **Martínez, D.; Sjögren, T.:** "Vertical externalities with lump-sum taxes: how much difference does unemployment make?"
- 2012/26, **Cubel, M.; Sanchez-Pages, S.:** "The effect of within-group inequality in a conflict against a unitary threat"
- 2012/27, **Andini, M.; De Blasio, G.; Duranton, G.; Strange, W.C.:** "Marshallian labor market pooling: evidence from Italy"
- 2012/28, **Solé-Ollé, A.; Viladecans-Marsal, E.:** "Do political parties matter for local land use policies?"
- 2012/29, **Buonanno, P.; Durante, R.; Prarolo, G.; Vanin, P.:** "Poor institutions, rich mines: resource curse and the origins of the Sicilian mafia"
- 2012/30, **Anghel, B.; Cabrales, A.; Carro, J.M.:** "Evaluating a bilingual education program in Spain: the impact beyond foreign language learning"
- 2012/31, **Curto-Grau, M.; Solé-Ollé, A.; Sorribas-Navarro, P.:** "Partisan targeting of inter-governmental transfers & state interference in local elections: evidence from Spain"

- 2012/32, **Kappeler, A.; Solé-Ollé, A.; Stephan, A.; Väilä, T.:** "Does fiscal decentralization foster regional investment in productive infrastructure?"
- 2012/33, **Rizzo, L.; Zanardi, A.:** "Single vs double ballot and party coalitions: the impact on fiscal policy. Evidence from Italy"
- 2012/34, **Ramachandran, R.:** "Language use in education and primary schooling attainment: evidence from a natural experiment in Ethiopia"
- 2012/35, **Rothstein, J.:** "Teacher quality policy when supply matters"
- 2012/36, **Ahlfeldt, G.M.:** "The hidden dimensions of urbanity"
- 2012/37, **Mora, T.; Gil, J.; Sicras-Mainar, A.:** "The influence of BMI, obesity and overweight on medical costs: a panel data approach"
- 2012/38, **Pelegrín, A.; García-Quevedo, J.:** "Which firms are involved in foreign vertical integration?"
- 2012/39, **Agasisti, T.; Longobardi, S.:** "Inequality in education: can Italian disadvantaged students close the gap? A focus on resilience in the Italian school system"

2013

- 2013/1, **Sánchez-Vidal, M.; González-Val, R.; Viladecans-Marsal, E.:** "Sequential city growth in the US: does age matter?"
- 2013/2, **Hortas Rico, M.:** "Sprawl, blight and the role of urban containment policies. Evidence from US cities"
- 2013/3, **Lampón, J.F.; Cabanelas-Lorenzo, P.; Lago-Peñas, S.:** "Why firms relocate their production overseas? The answer lies inside: corporate, logistic and technological determinants"
- 2013/4, **Montolio, D.; Planells, S.:** "Does tourism boost criminal activity? Evidence from a top touristic country"
- 2013/5, **García-López, M.A.; Holl, A.; Viladecans-Marsal, E.:** "Suburbanization and highways: when the Romans, the Bourbons and the first cars still shape Spanish cities"
- 2013/6, **Bosch, N.; Espasa, M.; Montolio, D.:** "Should large Spanish municipalities be financially compensated? Costs and benefits of being a capital/central municipality"
- 2013/7, **Escardíbul, J.O.; Mora, T.:** "Teacher gender and student performance in mathematics. Evidence from Catalonia"
- 2013/8, **Arqué-Castells, P.; Viladecans-Marsal, E.:** "Banking towards development: evidence from the Spanish banking expansion plan"
- 2013/9, **Asensio, J.; Gómez-Lobo, A.; Matas, A.:** "How effective are policies to reduce gasoline consumption? Evaluating a quasi-natural experiment in Spain"
- 2013/10, **Jofre-Monseny, J.:** "The effects of unemployment benefits on migration in lagging regions"
- 2013/11, **Segarra, A.; García-Quevedo, J.; Teruel, M.:** "Financial constraints and the failure of innovation projects"
- 2013/12, **Jerrim, J.; Choi, A.:** "The mathematics skills of school children: How does England compare to the high performing East Asian jurisdictions?"
- 2013/13, **González-Val, R.; Tirado-Fabregat, D.A.; Viladecans-Marsal, E.:** "Market potential and city growth: Spain 1860-1960"
- 2013/14, **Lundqvist, H.:** "Is it worth it? On the returns to holding political office"
- 2013/15, **Ahlfeldt, G.M.; Maennig, W.:** "Homevoters vs. leasevoters: a spatial analysis of airport effects"
- 2013/16, **Lampón, J.F.; Lago-Peñas, S.:** "Factors behind international relocation and changes in production geography in the European automobile components industry"
- 2013/17, **Guío, J.M.; Choi, A.:** "Evolution of the school failure risk during the 2000 decade in Spain: analysis of Pisa results with a two-level logistic model"
- 2013/18, **Dahlby, B.; Rodden, J.:** "A political economy model of the vertical fiscal gap and vertical fiscal imbalances in a federation"
- 2013/19, **Acacia, F.; Cubel, M.:** "Strategic voting and happiness"
- 2013/20, **Hellerstein, J.K.; Kutzbach, M.J.; Neumark, D.:** "Do labor market networks have an important spatial dimension?"
- 2013/21, **Pellegrino, G.; Savona, M.:** "Is money all? Financing versus knowledge and demand constraints to innovation"
- 2013/22, **Lin, J.:** "Regional resilience"
- 2013/23, **Costa-Campi, M.T.; Duch-Brown, N.; García-Quevedo, J.:** "R&D drivers and obstacles to innovation in the energy industry"
- 2013/24, **Huisman, R.; Stradnic, V.; Westgaard, S.:** "Renewable energy and electricity prices: indirect empirical evidence from hydro power"
- 2013/25, **Dargaud, E.; Mantovani, A.; Reggiani, C.:** "The fight against cartels: a transatlantic perspective"
- 2013/26, **Lambertini, L.; Mantovani, A.:** "Feedback equilibria in a dynamic renewable resource oligopoly: pre-emption, voracity and exhaustion"

- 2013/27, Feld, L.P.; Kalb, A.; Moessinger, M.D.; Osterloh, S.: "Sovereign bond market reactions to fiscal rules and no-bailout clauses – the Swiss experience"
- 2013/28, Hilber, C.A.L.; Vermeulen, W.: "The impact of supply constraints on house prices in England"
- 2013/29, Revelli, F.: "Tax limits and local democracy"
- 2013/30, Wang, R.; Wang, W.: "Dress-up contest: a dark side of fiscal decentralization"
- 2013/31, Dargaud, E.; Mantovani, A.; Reggiani, C.: "The fight against cartels: a transatlantic perspective"
- 2013/32, Saarimaa, T.; Tukiainen, J.: "Local representation and strategic voting: evidence from electoral boundary reforms"
- 2013/33, Agasisti, T.; Murtinu, S.: "Are we wasting public money? No! The effects of grants on Italian university students' performances"
- 2013/34, Flacher, D.; Harari-Kermadec, H.; Moulin, L.: "Financing higher education: a contributory scheme"
- 2013/35, Carozzi, F.; Repetto, L.: "Sending the pork home: birth town bias in transfers to Italian municipalities"
- 2013/36, Coad, A.; Frankish, J.S.; Roberts, R.G.; Storey, D.J.: "New venture survival and growth: Does the fog lift?"
- 2013/37, Giulietti, M.; Grossi, L.; Waterson, M.: "Revenues from storage in a competitive electricity market: Empirical evidence from Great Britain"

2014

- 2014/1, Montolio, D.; Planells-Struse, S.: "When police patrols matter. The effect of police proximity on citizens' crime risk perception"
- 2014/2, García-López, M.A.; Solé-Ollé, A.; Viladecans-Marsal, E.: "Do land use policies follow road construction?"
- 2014/3, Piolatto, A.; Rablen, M.D.: "Prospect theory and tax evasion: a reconsideration of the Yitzhaki puzzle"
- 2014/4, Cuberes, D.; González-Val, R.: "The effect of the Spanish Reconquest on Iberian Cities"
- 2014/5, Durán-Cabré, J.M.; Esteller-Moré, E.: "Tax professionals' view of the Spanish tax system: efficiency, equity and tax planning"
- 2014/6, Cubel, M.; Sanchez-Pages, S.: "Difference-form group contests"
- 2014/7, Del Rey, E.; Racionero, M.: "Choosing the type of income-contingent loan: risk-sharing versus risk-pooling"
- 2014/8, Torregrosa Hetland, S.: "A fiscal revolution? Progressivity in the Spanish tax system, 1960-1990"
- 2014/9, Piolatto, A.: "Itemised deductions: a device to reduce tax evasion"
- 2014/10, Costa, M.T.; García-Quevedo, J.; Segarra, A.: "Energy efficiency determinants: an empirical analysis of Spanish innovative firms"
- 2014/11, García-Quevedo, J.; Pellegrino, G.; Savona, M.: "Reviving demand-pull perspectives: the effect of demand uncertainty and stagnancy on R&D strategy"
- 2014/12, Calero, J.; Escardíbul, J.O.: "Barriers to non-formal professional training in Spain in periods of economic growth and crisis. An analysis with special attention to the effect of the previous human capital of workers"
- 2014/13, Cubel, M.; Sanchez-Pages, S.: "Gender differences and stereotypes in the beauty"
- 2014/14, Piolatto, A.; Schuett, F.: "Media competition and electoral politics"
- 2014/15, Montolio, D.; Trillas, F.; Trujillo-Baute, E.: "Regulatory environment and firm performance in EU telecommunications services"
- 2014/16, Lopez-Rodriguez, J.; Martinez, D.: "Beyond the R&D effects on innovation: the contribution of non-R&D activities to TFP growth in the EU"
- 2014/17, González-Val, R.: "Cross-sectional growth in US cities from 1990 to 2000"
- 2014/18, Vona, F.; Nicolli, F.: "Energy market liberalization and renewable energy policies in OECD countries"
- 2014/19, Curto-Grau, M.: "Voters' responsiveness to public employment policies"
- 2014/20, Duro, J.A.; Teixidó-Figueras, J.; Padilla, E.: "The causal factors of international inequality in CO₂ emissions per capita: a regression-based inequality decomposition analysis"
- 2014/21, Fleten, S.E.; Huisman, R.; Kilic, M.; Pennings, E.; Westgaard, S.: "Electricity futures prices: time varying sensitivity to fundamentals"
- 2014/22, Afcha, S.; García-Quevedo, J.: "The impact of R&D subsidies on R&D employment composition"
- 2014/23, Mir-Artigues, P.; del Río, P.: "Combining tariffs, investment subsidies and soft loans in a renewable electricity deployment policy"
- 2014/24, Romero-Jordán, D.; del Río, P.; Peñasco, C.: "Household electricity demand in Spanish regions. Public policy implications"
- 2014/25, Salinas, P.: "The effect of decentralization on educational outcomes: real autonomy matters!"
- 2014/26, Solé-Ollé, A.; Sorribas-Navarro, P.: "Does corruption erode trust in government? Evidence from a recent surge of local scandals in Spain"
- 2014/27, Costas-Pérez, E.: "Political corruption and voter turnout: mobilization or disaffection?"

- 2014/28, **Cubel, M.; Nuevo-Chiquero, A.; Sanchez-Pages, S.; Vidal-Fernandez, M.:** "Do personality traits affect productivity? Evidence from the LAB"
- 2014/29, **Teresa Costa, M.T.; Trujillo-Baute, E.:** "Retail price effects of feed-in tariff regulation"
- 2014/30, **Kilic, M.; Trujillo-Baute, E.:** "The stabilizing effect of hydro reservoir levels on intraday power prices under wind forecast errors"
- 2014/31, **Costa-Campi, M.T.; Duch-Brown, N.:** "The diffusion of patented oil and gas technology with environmental uses: a forward patent citation analysis"
- 2014/32, **Ramos, R.; Sanromá, E.; Simón, H.:** "Public-private sector wage differentials by type of contract: evidence from Spain"
- 2014/33, **Backus, P.; Esteller-Moré, A.:** "Is income redistribution a form of insurance, a public good or both?"
- 2014/34, **Huisman, R.; Trujillo-Baute, E.:** "Costs of power supply flexibility: the indirect impact of a Spanish policy change"
- 2014/35, **Jerrim, J.; Choi, A.; Simancas Rodríguez, R.:** "Two-sample two-stage least squares (TSTSLS) estimates of earnings mobility: how consistent are they?"
- 2014/36, **Mantovani, A.; Tarola, O.; Vergari, C.:** "Hedonic quality, social norms, and environmental campaigns"
- 2014/37, **Ferraresi, M.; Galmarini, U.; Rizzo, L.:** "Local infrastructures and externalities: Does the size matter?"
- 2014/38, **Ferraresi, M.; Rizzo, L.; Zanardi, A.:** "Policy outcomes of single and double-ballot elections"

2015

- 2015/1, **Foremny, D.; Freier, R.; Moessinger, M-D.; Yeter, M.:** "Overlapping political budget cycles in the legislative and the executive"
- 2015/2, **Colombo, L.; Galmarini, U.:** "Optimality and distortionary lobbying: regulating tobacco consumption"
- 2015/3, **Pellegrino, G.:** "Barriers to innovation: Can firm age help lower them?"
- 2015/4, **Hémet, C.:** "Diversity and employment prospects: neighbors matter!"
- 2015/5, **Cubel, M.; Sanchez-Pages, S.:** "An axiomatization of difference-form contest success functions"
- 2015/6, **Choi, A.; Jerrim, J.:** "The use (and misuse) of Pisa in guiding policy reform: the case of Spain"
- 2015/7, **Durán-Cabré, J.M.; Esteller-Moré, A.; Salvadori, L.:** "Empirical evidence on tax cooperation between sub-central administrations"
- 2015/8, **Batalla-Bejerano, J.; Trujillo-Baute, E.:** "Analysing the sensitivity of electricity system operational costs to deviations in supply and demand"
- 2015/9, **Salvadori, L.:** "Does tax enforcement counteract the negative effects of terrorism? A case study of the Basque Country"
- 2015/10, **Montolio, D.; Planells-Struse, S.:** "How time shapes crime: the temporal impacts of football matches on crime"
- 2015/11, **Piolatto, A.:** "Online booking and information: competition and welfare consequences of review aggregators"
- 2015/12, **Boffa, F.; Pingali, V.; Sala, F.:** "Strategic investment in merchant transmission: the impact of capacity utilization rules"
- 2015/13, **Slemrod, J.:** "Tax administration and tax systems"
- 2015/14, **Arqué-Castells, P.; Cartaxo, R.M.; García-Quevedo, J.; Mira Godinho, M.:** "How inventor royalty shares affect patenting and income in Portugal and Spain"
- 2015/15, **Montolio, D.; Planells-Struse, S.:** "Measuring the negative externalities of a private leisure activity: hooligans and pickpockets around the stadium"
- 2015/16, **Batalla-Bejerano, J.; Costa-Campi, M.T.; Trujillo-Baute, E.:** "Unexpected consequences of liberalisation: metering, losses, load profiles and cost settlement in Spain's electricity system"
- 2015/17, **Batalla-Bejerano, J.; Trujillo-Baute, E.:** "Impacts of intermittent renewable generation on electricity system costs"
- 2015/18, **Costa-Campi, M.T.; Paniagua, J.; Trujillo-Baute, E.:** "Are energy market integrations a green light for FDI?"
- 2015/19, **Jofre-Monseny, J.; Sánchez-Vidal, M.; Viladecans-Marsal, E.:** "Big plant closures and agglomeration economies"
- 2015/20, **García-López, M.A.; Hémet, C.; Viladecans-Marsal, E.:** "How does transportation shape intrametropolitan growth? An answer from the regional express rail"
- 2015/21, **Esteller-Moré, A.; Galmarini, U.; Rizzo, L.:** "Fiscal equalization under political pressures"
- 2015/22, **Escardíbul, J.O.; Afcha, S.:** "Determinants of doctorate holders' job satisfaction. An analysis by employment sector and type of satisfaction in Spain"
- 2015/23, **Aidt, T.; Asatryan, Z.; Badalyan, L.; Heinemann, F.:** "Vote buying or (political) business (cycles) as usual?"
- 2015/24, **Albæk, K.:** "A test of the 'lose it or use it' hypothesis in labour markets around the world"
- 2015/25, **Angelucci, C.; Russo, A.:** "Petty corruption and citizen feedback"

- 2015/26, Moriconi, S.; Picard, P.M.; Zanaj, S.:** "Commodity taxation and regulatory competition"
- 2015/27, Brekke, K.R.; Garcia Pires, A.J.; Schindler, D.; Schjelderup, G.:** "Capital taxation and imperfect competition: ACE vs. CBIT"
- 2015/28, Redonda, A.:** "Market structure, the functional form of demand and the sensitivity of the vertical reaction function"
- 2015/29, Ramos, R.; Sanromá, E.; Simón, H.:** "An analysis of wage differentials between full-and part-time workers in Spain"
- 2015/30, Garcia-López, M.A.; Pasidis, I.; Viladecans-Marsal, E.:** "Express delivery to the suburbs the effects of transportation in Europe's heterogeneous cities"
- 2015/31, Torregrosa, S.:** "Bypassing progressive taxation: fraud and base erosion in the Spanish income tax (1970-2001)"
- 2015/32, Choi, H.; Choi, A.:** "When one door closes: the impact of the hagwon curfew on the consumption of private tutoring in the republic of Korea"
- 2015/33, Escardíbul, J.O.; Helmy, N.:** "Decentralisation and school autonomy impact on the quality of education: the case of two MENA countries"
- 2015/34, González-Val, R.; Marcén, M.:** "Divorce and the business cycle: a cross-country analysis"
- 2015/35, Calero, J.; Choi, A.:** "The distribution of skills among the European adult population and unemployment: a comparative approach"

