

Document de treball de l'IEB 2010/10

EXPLORING EDUCATIONAL MOBILITY IN EUROPE

Jorge Calero, Antonio Di Paolo, Josep Lluís Raymond

Document de
treball de l'IEB

EXPLORING EDUCATIONAL MOBILITY IN EUROPE

Jorge Calero, Antonio Di Paolo, Josep Lluís Raymond

The **IEB** research program in **Fiscal Federalism** aims at promoting research in the public finance issues that arise in decentralized countries. Special emphasis is put on applied research and on work that tries to shed light on policy-design issues. Research that is particularly policy-relevant from a Spanish perspective is given special consideration. Disseminating research findings to a broader audience is also an aim of the program. The program enjoys the support from the **IEB-Foundation** and the **IEB-UB** Chair in Fiscal Federalism funded by Fundació ICO, Instituto de Estudios Fiscales and Institut d'Estudis Autonòmics.

The **Barcelona Institute of Economics (IEB)** is a research centre at the University of Barcelona which specializes in the field of applied economics. Through the **IEB-Foundation**, several private institutions (Caixa Catalunya, Abertis, La Caixa, Gas Natural and Applus) support several research programs.

Postal Address:

Institut d'Economia de Barcelona
Facultat d'Economia i Empresa
Universitat de Barcelona
C/ Tinent Coronel Valenzuela, 1-11
(08034) Barcelona, Spain
Tel.: + 34 93 403 46 46
Fax: + 34 93 403 98 32
ieb@ub.edu
<http://www.ieb.ub.edu>

The IEB working papers represent ongoing research that is circulated to encourage discussion and has not undergone a peer review process. Any opinions expressed here are those of the author(s) and not those of IEB.

EXPLORING EDUCATIONAL MOBILITY IN EUROPE

Jorge Calero, Antonio Di Paolo, Josep Lluís Raymond

ABSTRACT: This paper is concerned with the investigation of the intergenerational mobility of education in several European countries and its changes across birth cohorts (1940-1980), using a new mobility index that considers the total degree of mobility as the weighted sum of mobility with respect to both parents. Moreover, this mobility index enables the analysis of the role of family characteristics as mediating factors in the statistical association between individual and parental education. We find that Nordic countries display lower levels of educational persistence but that the degree of mobility increases over time only in those countries with low initial levels. Moreover, the results suggest that the degree of mobility with respect to fathers and mothers converges to the same level and that family characteristics accounts for an important part of the statistical association between parental education and children's schooling; a particular finding is that the most important elements of family characteristics are the family's socio-economic status and educational assortative mating of the parents.

JEL Codes: J62, I21, I29, D13

Keywords: educational economics, intergenerational mobility, Europe, birth cohorts, family.

Antonio Di Paolo
Dpt. of Applied Economics
Universitat Autònoma de
Barcelona & IEB
Campus Bellaterra—Edif.B
08193 Cerdanyola (Spain)
E-mail: antonio.dipaolo@uab.cat
Phone: +34 93 581 34 15
Fax: +34 93 581 22 92

Josep Lluís Raymond
Dpt. of Economics and
Economic History
Universitat Autònoma de
Barcelona & IEB
Campus Bellaterra—Edif.B
08193 Cerdanyola (Spain)
E-mail: josep.raymond@uab.cat
Phone: +34 93 581 17 11
Fax: +34 93 581 20 12

Jorge Calero
Dpt. of Public Finance
Universitat de Barcelona &
IEB
Av. Diagonal 690
08034 Barcelona (Spain)
Phone: +34 93 402 18 19
Fax: +34 93 402 18 13

1.Introduction

The existence of some statistical association between individual outcomes and parental socio-economic position is considered a violation of a broad principle of the equality of opportunities. A high level of association indicates low mobility and implies that individuals from poor social origins would face extremely restricted life chances and that they would have difficulty achieving their complete economic potential. The empirical research on intergenerational mobility has significantly expanded in recent decades. An important number of contributions can be found in the sociological literature; traditionally, sociologists are prevalently concerned about intergenerational association in occupation or social class¹. On the contrary, the majority of the economic literature has usually been concerned about intergenerational persistence in earnings or in income (Solon 1999, 2002; Corak 2004 and Blanden 2009 provide extensive reviews about these topics). However, the economic literature contains a few (but growing) number of contributions concerned with the analysis of educational mobility from an intergenerational perspective. From a theoretical perspective, following Solon (2004), a strong relationship between individual and parental education is one of the most important mechanisms behind intergenerational socio-economic persistence (in income, but also in occupation, poverty or other outcomes).

The principal issue that has been considered in this literature is the extent to which the intergenerational persistence in educational attainment is determined by genetic transmission. In fact, many authors have tried to obtain an estimate of the intergenerational elasticity of years of schooling, uncontaminated by “nature” or genetic effects (see Behrman and Rosenzweig 2002, Sacerdote 2002, or Plug 2004 within others²). Unfortunately, our data do not allow controlling for genetic effects; this implies that we are not able to present causal evidence on educational persistence. However, if we assume that genetic effects are the same between countries and across time, we can reasonably consider that genetics is not a real problem for our comparative approach; that is, the measure of educational mobility that we present might still be valid (even if with a descriptive interpretation).

¹ The reader can consult Erikson and Goldthorpe (2002), Esping-Andersen (2004), and Goldthorpe and Mills (2005) for a comprehensive review of the sociological literature on intergenerational mobility.

² The special feature of these studies is the use of special samples (twin parents, or adoptees) that allow ruling out the effect of genetic ability. The other usual technique is consists in exploiting the exogenous variations in parental schooling produced by educational reforms (see, Chevalier 2004, or Oreopoulos et al. 2006).

In fact, other studies (as this one) are explicitly focused on the “measurement” of educational mobility in a descriptive sense. The first important contribution concerning this concrete topic is from Checchi et al. (1999), in which the authors compare educational mobility (and income inequality) in Italy and in the US, concluding that Italy has lower levels of mobility than the US despite having lower levels of inequality. Comi (2003) compares earnings and educational mobility in Europe, using the data from the young sample of the ECHP (that is, she only considers individuals who are still living with their parents, which provokes serious problems of sample selection); she reports low levels of mobility for countries in southern Europe, France and Ireland, high levels for Nordic countries, the Netherlands and Austria and an intermediate position for Belgium and Germany. Another study from Chevalier et al. (2009) compares educational mobility within European countries using data from the International Adult Literacy Survey (IALS); his general results suggest that educational mobility is negatively correlated with educational inequality and that the degree of mobility has increased over time. Moreover, he also finds that Nordic countries are the most mobile ones and that the less mobile are Germany, Italy, Ireland and Poland. There is also a recent contribution of Checchi et al. (2008), in which they analyse educational persistence across cohorts in Italy; they find that, even if mobility has increased over time, the relative disadvantage of individuals from poor backgrounds persists up to the end of the period considered. Finally, Hertz et al. (2008) compare the temporal patterns of the intergenerational persistence of education for 42 different countries, considering different measures of mobility (namely, the intergenerational regression coefficient and the parent-child correlation in educational attainment); their results show a significant heterogeneity between countries but also with respect to the measure of mobility considered. Even so, they suggest that northern European countries display the lowest persistence, while the highest records of persistence are those of Latin America countries.

Given the research background on educational mobility, our contribution to the existing literature is threefold. First, we propose a new index for measuring intergenerational mobility, which considers both absolute and relative changes in the intergenerational association of educational attainment. That is, as we explain below, our measure of mobility takes into account changes in intergenerational persistence (the beta coefficient, or the relative measure of mobility) and the relative variances of years of schooling³ between parents’ and children’s generations (more specifically, the R-squared of the intergenerational regression). Note that the necessity of jointly considering these two components, in order to obtain a clear picture of mobility

³ We consider educational mobility in terms of the “imputed” years of education, derived from the information on the highest completed level of education in terms of ISCED levels (Unesco 1997); we will return to this point later.

(especially for comparison purposes), has been considered by Hertz et al. (2008) and by Checchi et al. (2008).

Second, we believe that the intergenerational transmission of education is a process that simultaneously involves both parents, even if to different extents; however, educational mobility has generally been computed with respect to a single measure of parental education (father's education, the highest level between the two parents, the mean level, etc.). We are able to compute the mobility index as a weighted mean of mobility with respect to the father and mobility with respect to the mother. In this way, we take into account the potential parental assortative mating with respect to education (i.e., parents match in the marriage market according to human capital), which can reinforce the degree of educational transmission, as we explain below. Moreover, we are also able to obtain the separate contribution of both parents and check whether and when (in terms of time) educational persistence with respect to the two parents converges to the same level.

Third, with this study, we try to fill the lack of European evidence on intergenerational mobility in a comparative perspective (in particular for Central and Southern countries). In fact, we apply our methodology to 12 European countries⁴ with homogeneous data from the 2005 wave of EU-SILC, which contains retrospective information about parental education and family characteristics at the age of 14. Moreover, by computing our standardised measure of intergenerational mobility separately for different birth cohorts (eight five-year birth cohorts), we are able to analyse in a consistent way the temporal patterns of educational mobility in several European countries over a long time period (that is, for individuals born between 1940 and 1980).

Indeed, the analysis of time patterns has already captured the attention of many researchers on intergenerational socio-economic mobility (see, for example, Ermisch and Francesconi 2004, Mayer and Loopo 2005, Nicoletti and Ermisch 2007, and Lee and Solon 2009). This is due to the fact that examining temporal changes and its comparison across countries enables the contemplation of how institutional changes affect intergenerational mobility. There are different institutions that may simultaneously affect intergenerational mobility (in income, but also in education). For example, the labour market, by determining in a broad sense “the return to education”, influences the incentives to invest more or less in a child's human capital. Moreover,

⁴ Namely: Denmark, Finland, Norway and Sweden (Nordic Countries); Austria, Belgium, France and the Netherlands (Continental Countries); Greece, Italy, Portugal and Spain (Southern Countries).

the educational system can affect the cost of this investment by modifying the general availability and the quantity of educational resources.

However, the labour market and the educational system are not the only institutions that may affect intergenerational mobility. As noted by many authors (for example, Esping-Andersen 2004, Nicoletti and Ermisch 2007), the family represents the other important institution that exerts important effects on socio-economic persistence. According to this intuition, another important innovation of this contribution is that we explicitly model the effect of family characteristics on the degree of observed mobility in years of schooling. With a similar logic of the methodology in Blanden et al. (2007)⁵, we consider family characteristics mediating variables in the intergenerational persistence of educational attainment. Specifically, we analyse the extent to which the statistical association between parental education and family characteristics modifies the intergenerational transmission process; in other words, we determine how educational persistence (the estimated intergenerational elasticity parameter) is affected by the relationship between parental education and family characteristics.

We argue that the relationship between parental educational background and family characteristics reinforces the link between parental education and child's education; in other words, if family characteristics were not associated with parental education, intergenerational mobility would be higher. For family characteristics, we use all the relevant information contained in the 2005 wave of the EU-SILC: namely, a) the number of siblings, b) family structure, c) the frequency of financial problems in the family, d) parental labour status and family socio-economic status (clearly related to parental education). Moreover, as explained in the next section, we implicitly consider as family characteristics d) the potential parental assortative mating according to education. This means that we will be able to quantify the contribution of parental assortative mating (as for others family characteristics) on observed educational mobility. Therefore, in the next section, we first define our intergenerational mobility index, emphasising its descriptive properties. Later, we proceed to illustrate how this index enables the linking of family characteristics with intergenerational mobility.

With these purposes in mind, for the rest of the paper, we proceed as follows: in section 2, we review relevant elements of previous research, highlighting how we complement the existing

⁵ The logic is similar but the idea behind it is different: they consider how education, ability, non-cognitive skills and labour market experience affect the intergenerational income transmission mechanism. They suggest that the association between these factors, parental income and individual earnings explain a significant part of intergenerational transmission; moreover, the temporal change of these relationships accounts for the 80% of the decline on intergenerational mobility in the UK.

evidence with the present contribution. Section 3 is dedicated to the definition of the mobility index, to the description of its properties (3.1), and to the methodology for obtaining a linkage between family characteristics and educational mobility (3.2). Section 4 contains the empirical results from the baseline index and its temporal patterns (4.1) as well as from the simulation, which allows accounting for the effect of family characteristics (4.2). In section 5, we discuss the results, and section 6 concludes.

2. Empirical Methodology

2.1 Defining the Educational Mobility Index

Traditionally, much of the empirical research on socio-economic mobility has been centred on measuring the “degree” of the intergenerational transmission of socio-economic status; focusing on education mobility, one may describe the statistical association between parental education and child outcomes by using probabilistic measures such as transition matrices (or derived indices) described in Checchi (2006) and adopted by Comi (2003), Chevalier et al. (2007), and by Heineck and Riphahn (2009). An alternative consists of the use of regression coefficients between the child’s and the parents’ years of completed schooling or correlation coefficients, which respectively represent a relative and an absolute or standardised measure of intergenerational educational persistence. In fact, as suggested by Hertz et al. (2007) and by Checchi et al. (2008), the regression coefficient contains the ratio between the variances of the offspring’s years of education and the parents’ years of education; this means that an increase in the variance of parental education (relative to the variance of child’s education) may distort the measure of mobility. Indeed, the correlation coefficient represents an absolute or standardised measure of mobility because it is normalised with respect to changes in inequalities in education for the children’s and/or the parent’s generations⁶.

Nevertheless, as also noted by Checchi et al. (2008), these measures of intergenerational mobility neglect the potential effect of parental “assortative mating” on human capital. As mentioned above, a higher degree of parental matching according to education may strengthen the degree of educational transmission through the quality-quantity trade-off channels (better-

⁶ Moreover, Checchi et al. (2008) propose an intuitive decomposition of the correlation coefficient, whose results are very appealing for the analysis of temporal changes because it might account for changes in composition effects and thus provide the “correct measure for analysing intergenerational transmission of education” (the marginal probability of child’s education, conditional to that of the parents).

educated parents have fewer children but invest more resources in their human capital). However, regression or correlation coefficients (but also the transition matrices) are usually estimated with respect to a single proxy of parental education (father's education, higher completed parental education, mean parental education, etc.), ignoring that *i*) both parents “transmit” education to the child, and *ii*) the relation between paternal and maternal education may strengthen the degree of global persistence in educational attainment.

In order to obtain a measure of education mobility that simultaneously allows for intergenerational transmission with respect to both parents and consistently captures the absolute and the relative components of intergenerational mobility, we generalise the mobility index proposed by Raymond et al. (2009). In particular, defining as c the natural logarithm of child's years of education ($c = \ln(S_c)$, where S_c represents the imputed years of education of the child), f represents the natural logarithm of father's years of education ($f = \ln(S_f)$) and m represents the natural logarithm of mother's years of education ($m = \ln(S_m)$), an index of educational mobility may be defined as⁷

$$I^{EM} = \frac{\sigma_{(c-f)}^2 + \sigma_{(c-m)}^2}{(\sigma_c^2 + \sigma_f^2) + (\sigma_c^2 + \sigma_m^2)} \quad (1)$$

According to the index proposed, in cases of perfect mobility, where the education of the father (mother) is completely transmitted to the child, it follows that $\sigma_{(c-f)}^2 = \sigma_c^2 + \sigma_f^2 - 2\sigma_{cf} = 0$ ($\sigma_{(c-m)}^2 = \sigma_c^2 + \sigma_m^2 - 2\sigma_{cm} = 0$). In the opposite situation, if the correlation between father's (mother's) and child's years of schooling is zero, we obtain the case of perfect mobility, as it results that $\sigma_{(c-f)}^2 = \sigma_c^2 + \sigma_f^2$ ($\sigma_{(c-m)}^2 = \sigma_c^2 + \sigma_m^2$). That is, the mobility index proposed always takes a value between zero (perfect immobility) and one (perfect mobility), respectively. Moreover, this mobility index allows decomposing the global observed mobility between mobility with respect to parental education, mobility with respect to maternal education, and their respective weights. This is because, with simple algebra, it is possible to specify the index as

$$I^{EM} = \frac{\sigma_{(c-f)}^2 + \sigma_{(c-m)}^2}{(2\sigma_c^2 + \sigma_f^2 + \sigma_m^2)} = \underbrace{\frac{\sigma_{(c-f)}^2}{(\sigma_c^2 + \sigma_f^2)}}_{\text{mobility with respect to the father}} \cdot \lambda_f + \underbrace{\frac{\sigma_{(c-m)}^2}{(\sigma_c^2 + \sigma_m^2)}}_{\text{mobility with respect to the mother}} \cdot \lambda_m, \quad (2)$$

⁷ Note that the proposed index follows a well-defined empirical distribution, given that each of its elements converges in distribution to a χ^2 ; therefore, we are also able to report bootstrapped 70% confidence interval for the mobility index.

where

$$\lambda_f = \frac{\sigma_c^2 + \sigma_f^2}{(2\sigma_c^2 + \sigma_f^2 + \sigma_m^2)}; \quad \lambda_m = \frac{\sigma_c^2 + \sigma_m^2}{(2\sigma_c^2 + \sigma_f^2 + \sigma_m^2)} \quad (2a)$$

and $\lambda_f + \lambda_m = 1$. This decomposition could be very useful if one is interested in the analysis of a cross-country comparison of temporal changes in education mobility (as in the present study). In fact, fathers and mothers may transmit education to their offspring in very different ways, and such differences could change with time and across countries. Moreover, as explained in what follows, defining mobility with respect to both parents offers the appealing possibility of simulating the degree of intergenerational mobility in the case of absence of assortative mating (that is, no statistical relationships between fathers' and mothers' education levels).

Finally, we illustrate why this index accounts for both relative and absolute intergenerational mobility. That is, our mobility index takes into account not only changes of child's and parents', mean years of education but also changes in the inequality (i.e., the variances) of educational attainment in both child's and parents' generations. From the estimation of the following intergenerational equations of educational attainment,

$$\begin{aligned} \ln(S_c) - \overline{\ln(S_c)} &= \hat{\beta}_f \cdot (\ln(S_f) - \overline{\ln(S_f)}) + \hat{\varepsilon}_f \Rightarrow c = \hat{\beta}_f \cdot f + \hat{\varepsilon}_f \\ \ln(S_c) - \overline{\ln(S_c)} &= \hat{\beta}_m \cdot (\ln(S_m) - \overline{\ln(S_m)}) + \hat{\varepsilon}_m \Rightarrow c = \hat{\beta}_m \cdot m + \hat{\varepsilon}_m \end{aligned} \quad (3)$$

which relates the logarithm of child's years of education with the logarithm of parental and maternal years of education, respectively, it is straightforward to express the mobility index as

$$I^{EM} = \frac{\sigma_{(c-f)}^2 + \sigma_{(c-m)}^2}{(2\sigma_c^2 + \sigma_f^2 + \sigma_m^2)} = \underbrace{\left[(1 - R_f^2) + (1 - R_m^2) \right]}_1 \cdot \omega_u + \underbrace{(1 - \hat{\beta}_f)^2 \cdot \omega_f + (1 - \hat{\beta}_m)^2 \cdot \omega_m}_2 \quad (4)$$

where the two R-squared are obtained from the respective intergenerational regressions, and

$$\omega_u = \frac{\sigma_c^2}{(2\sigma_c^2 + \sigma_f^2 + \sigma_m^2)}; \quad \omega_f = \frac{\sigma_f^2}{(2\sigma_c^2 + \sigma_f^2 + \sigma_m^2)}; \quad \omega_m = \frac{\sigma_m^2}{(2\sigma_c^2 + \sigma_f^2 + \sigma_m^2)} \quad (4a)$$

represent the weight of each component, with $\omega_u + \omega_f + \omega_m = 1$. In words, this last reparameterisation allows decomposing total observed mobility as the weighted sum of two components: 1) the lack of explanatory power of parental education over child's education recovered by the R-squared component (representing the relative variances of parents' and child's years of schooling), and 2) the lack of intergenerational persistency in educational attainment, namely the relative measure of educational mobility. As documented by Hertz. et al.

(2008), these two components may behave very differently. Therefore, considering only one of the two (namely, the persistence component) may provide misleading results on the intergenerational mobility of education: this would be especially true if the purpose of the analysis consisted of a cross-country comparison of temporal changes.

2.2 *Linking Mobility and Family Characteristics*

Apart from measuring intergenerational educational mobility and its different components, the index proposed here holds another interesting property for the analysis of education transmission. In general, the degree to which the socio-economic status of a given generation is inherited from the previous one may be related to a wide set of elements, many of them observables. Among these observable elements, we can consider on the one hand “institutional factors” (in a broad meaning, i.e. the educational system and the labour market), and on the other, “educational circumstances”, mainly located within the other relevant institution: the family⁸. Focusing on the latter element, the proposed index enables the analysis of the extent to which the covariance between parents’ and child’s education is affected by the statistical association between parental schooling and educational circumstances at the family level. In other words, defining educational circumstances as the set of family characteristics during the childhood (which act as determinants of individual schooling)⁹, we can exploit the mobility index for assessing the effect of removing the potential relationship between these elements and the estimated intergenerational persistence parameter (namely, the betas in eq. 4). As explained in what follows, this would be done by relating the estimation of beta coefficients from the simple linear regression models in (3), with the estimation of the intergenerational elasticity parameter(s) in a multivariate regression model.

Let us suppose that the data generation process for completed years of schooling might be represented by an Extended Measurement Model with k covariates, including father’s and mother’s education. After the OLS estimation, this model takes the form

$$c = \tilde{\beta}_f^* f + \tilde{\beta}_m^* m + \tilde{\delta}' R + \tilde{u} = \tilde{\psi}' W + \tilde{u} , \quad (5)$$

⁸ Unfortunately, we cannot analyse the effect of school-level educational circumstances, of school quality, educational resources, neighbourhood and peer effects. This is due to the fact that, in general, there are no retrospective data that also cover school variables; moreover, the information about where the individuals were living at the age of 14 is not available in the EU-SILC database.

⁹ Namely, a) family composition, b) frequency of financial problems during the childhood, c) parental labour situation and occupation, and implicitly d) educational assortative mating; see section 2.2 and table 2 of the Appendix for details.

where $\tilde{\psi}'_k = (\tilde{\beta}_f^*, \tilde{\beta}_m^*, \tilde{\delta})$ represents the coefficient vector estimates, and $W_{k \times N} = (f, m, R)$, where $k \times N$ is the matrix containing the full set of explanatory variables (specifically, the logarithm of parental years of education and the other family characteristics in R). Therefore, the betas' OLS estimators from the bivariate measurement models in (3) can be written as

$$\begin{aligned}\hat{\beta}_f &= (f'f)^{-1} f'c = (f'f)^{-1} f'(\tilde{\beta}_f^* f_i + \tilde{\psi}'_f W_f + \tilde{u}) \\ \hat{\beta}_m &= (m'm)^{-1} m'c = (m'm)^{-1} m'(\tilde{\beta}_m^* m_i + \tilde{\psi}'_m W_m + \tilde{u})\end{aligned}\quad (6)$$

where W_f and W_m represent the matrix W , excluding the elements f and m , respectively (the same applies for the coefficient vector). The mechanical orthogonality between the OLS residuals (\tilde{u}) and the regressors of the Extended Model in (5) enables the obtaining of the following representation of the persistence parameter estimates from the bivariate measurement models

$$\begin{aligned}\hat{\beta}_f &= \tilde{\beta}_f^* + \overbrace{(f'f)^{-1} f'W_f \tilde{\psi}'_f}^A \\ \hat{\beta}_m &= \tilde{\beta}_m^* + \underbrace{(m'm)^{-1} m'W_m \tilde{\psi}'_m}_B\end{aligned}\quad (6a)$$

Note that this represents exactly the classical result from OLS estimation with omitted variables. These equations suggest that the relative degree of (im)mobility, captured by the coefficient estimates from the bivariate measurement models in (3), could be expressed as the sum of two elements: the estimated elasticity with respect to father's (mother's) education from the Extended Model, and another component that represents the link between one parent's education and the rest of the variables included in the matrix W (denoted by A for the father and by B for the mother, respectively). Indeed, from the basic algebraic properties of the OLS estimator, we can retrieve the A and B components (6a), by making use of the coefficient estimates from the following $2 \times (k-1)$ auxiliary regressions,

$$\begin{aligned}W_f &= f' \hat{\gamma}_f + \hat{v}_f \Rightarrow \hat{\gamma}_f = (f'f)^{-1} f'W_f = A \\ W_m &= m' \hat{\gamma}_m + \hat{v}_m \Rightarrow \hat{\gamma}_m = (m'm)^{-1} m'W_m = B\end{aligned}\quad (7)$$

This result implies that the coefficient estimates from the simple linear regressions that relates the logarithm of child's years of education to the logarithm of father's and mother's years of education, respectively, should be represented by the sum of the parameters estimates of parental years of schooling ($\tilde{\beta}_{f,m}^*$) from the extended model and by the cross-product between the

estimated coefficients from the $(k-1)$ auxiliary regressions $(\hat{\gamma}_{f,m})$ and the rest of estimated parameters from eq. (5) $(\tilde{\psi}_{f,m})$; in formulas,

$$\begin{aligned}\hat{\beta}_f &= \tilde{\beta}_f^* + \overbrace{(f'f)^{-1} f'W_f \tilde{\psi}'_f}^A = \tilde{\beta}_f^* + \hat{\gamma}'_f \tilde{\psi}_f \\ \hat{\beta}_m &= \tilde{\beta}_m^* + \underbrace{(m'm)^{-1} m'W_m \tilde{\psi}'_m}_B = \tilde{\beta}_m^* + \hat{\gamma}'_m \tilde{\psi}_m\end{aligned}\quad (8)$$

In order to exploit these results for the analysis of intergenerational mobility, remember that the index can also be defined with respect to the beta coefficients from equation (3). If we replace them with their respective estimations in formula (8), we get

$$\begin{aligned}I^{EM} &= \left[(1 - R_f^2) + (1 - R_m^2) \right] \cdot \omega_u + \left(1 - \overbrace{\left(\tilde{\beta}_f^* + \hat{\gamma}'_{f1} \tilde{\psi}_{f1} + \dots + \hat{\gamma}'_{fk-1} \tilde{\psi}_{fk-1} \right)}^{\hat{\beta}_f} \right)^2 \cdot \omega_f + \\ &+ \left(1 - \underbrace{\left(\tilde{\beta}_m^* + \hat{\gamma}'_{m1} \tilde{\psi}_{m1} + \dots + \hat{\gamma}'_{mk-1} \tilde{\psi}_{mk-1} \right)}_{\hat{\beta}_m} \right)^2 \cdot \omega_m.\end{aligned}$$

As mentioned above, this specification of the mobility index allows exploring how the link between parental education and the other family characteristics included in the Extended Model may potentially affect the observed educational mobility by modifying the estimated value of the betas (which represents the degree of intergenerational educational persistence). Specifically, with this approximation, we can ask, for example, which would have been the degree of intergenerational mobility in educational attainment in the hypothetical situation of no systematic relationships between the family characteristic (j) (contained in matrix R) and parental years of education. The answer may be found in the computation of the simulated mobility index, given by

$$\begin{aligned}I_*^{EM} &= \left[(1 - R_f^2) + (1 - R_m^2) \right] \cdot \omega_u + \left(1 - \left(\tilde{\beta}_f^* + \hat{\gamma}'_{f1} \tilde{\psi}_{f1} + \dots + \hat{\gamma}'_{fj-1} \tilde{\psi}_{fj-1} + \hat{\gamma}'_{fj+1} \tilde{\psi}_{fj+1} + \dots + \hat{\gamma}'_{fk-1} \tilde{\psi}_{fk-1} \right) \right)^2 \cdot \omega_f + \\ &+ \left(1 - \left(\tilde{\beta}_m^* + \hat{\gamma}'_{m1} \tilde{\psi}_{m1} + \dots + \hat{\gamma}'_{mj-1} \tilde{\psi}_{mj-1} + \hat{\gamma}'_{mj+1} \tilde{\psi}_{mj+1} + \dots + \hat{\gamma}'_{mk-1} \tilde{\psi}_{mk-1} \right) \right)^2 \cdot \omega_m;\end{aligned}$$

that is, removing the j -component of the estimated values of the betas in equations (8) (which is equivalent to supposing that the covariance between parental education and the family characteristic (j) is zero).

We operationalise this methodology for the analysis of education mobility by formulating the following question: what would have been the degree of educational mobility in the hypothetical

case of breaking the statistical association between absolute education mobility and the complete set of educational circumstances at the family level? This kind of empirical ceiling of the intergenerational mobility of schooling might be computed by removing from the formula of the simulated index all of the $k-1$ cross products ($\hat{\gamma}_{f,m} \times \tilde{\psi}_{f,m}$). In general, what we expect is a higher degree of mobility, as in some way, family characteristics could reinforce the connection between parental education and children's attainment. As explained before, this means that we consider family characteristics to be mediating variables in the statistical association between parents' and child's education.

However, even cutting the statistical connection between absolute mobility and family characteristics (*via* parental education), we still expect some degree of intergenerational educational persistence; this is because the strength of the association between parental and child's schooling is also determined by important institutional elements (Solon (2004), Hassler et al. (2007)). In this sense, cross-country differences in this "residual" persistence may arise from the extent of comprehensiveness of the educational system, from the age of initial tracking into different types of education (academic, vocational, etc.), or from other relevant features of the educational system. Nevertheless, changes in residual persistence may also be the result of differences in the labour market, related to the returns to human capital (i.e., the degree of skill bias in the productive technology, labour market regulation, segmentation etc.). In a broad sense, we might interpret the residual persistence as the (net) institutional effects on educational mobility (also net of the potential interaction between institutional effects and family characteristics)¹⁰.

Additionally, we can also check the extent to which each component of educational circumstances (significantly) contributes to the observed degree of educational persistence across generations. Removing each of the $k-1$ ($\hat{\gamma}_{f,m} \times \tilde{\psi}_{f,m}$) components from the simulated mobility index formula, it would be possible to analyse the impact of every element of family characteristics (contained in matrix R) on the observed educational mobility. In other words, we will check whether and how each element of family characteristics modifies the estimates of intergenerational persistence in the years of education. Note also that, by the definition of the mobility index, educational assortative mating is implicitly considered among family characteristics. This is because the index is defined with respect to (a weighted sum of) mobility

¹⁰ Note that the estimated residual mobility could also be the result of unmeasured family characteristics and/or other elements acting as determinants of educational attainment; as in the case of genetic ability, if we assume that such elements are the same between countries and across time, the interpretation of the results might still be valid.

with respect of the father and mobility with respect of the mother. This implies that the first component of the matrix $W_f (W_m)$ represents the log of mother's (father's) years of education. Therefore, the first ($\hat{\gamma}_{f,m}$) estimates from the auxiliary regressions in (7) represent a parent's years of education elasticity with respect to his/her spouse's schooling: in other words, they represent the extent of educational assortative mating among the parents. This would mean that removing from the simulated index the first ($\hat{\gamma}_{f,m} \times \tilde{\psi}_{f,m}$) components (that is, supposing that there is no statistical association between parents' years of completed schooling), we should quantify which is the contribution of educational assortative mating to the observed degree of intergenerational persistence in educational attainment (an issue that, to the best of our knowledge, has only been considered by Güell et al. 2007).

3. Empirical Results

The empirical analysis has been realised with the data from the 2005 wave of EU-SILC (European Survey on Income and Living Conditions) of 12 countries, divided into three groups according to the following standard classification: namely, Denmark, Finland, Norway and Sweden defined as Nordic countries. Austria, Belgium, France and the Netherlands, defined as Continental countries; and Greece, Italy, Portugal and Spain as the group of Southern countries. As commented above, we consider the 2005 wave because it contains retrospective information about family composition and parental background when the individual was 14 years old, which is considered the crucial age for a child's educational process. This particular wave of the European Survey also allows splitting the sample into eight sub-samples of five-year birth cohorts for each country¹¹. In order to compute the mobility index as in equations (1)-(2), we impute individuals', fathers' and mothers' years of education from the information about completed education defined according to the ISCED classification; years of completed education are imputed in the same way for individuals than for parents, consistent with the normal (country-specific) expected length of each ISCED level¹².

¹¹ Given that the additional questionnaire about family characteristics during childhood in the EU-SILC is only directed at individuals aged between 25 and 65 in 2005, we consider the first birth cohort 1940-45 and the last 1975-80. Table 1 contains the complete definition of birth cohorts, and the number of observation for each cohort for the selected European Countries. In the case of Denmark, we cannot consider the first two birth cohorts (1940-45 and 1945-50), because the information about maternal education is not reliable (namely, maternal education in the first two cohorts is fixed for all observation to ISCED2); we preferred excluding these two initial cohorts from the analysis rather than computing mobility only with respect to parental education.

¹² In table 2, we report the detailed information about the conversion of ISCED levels into equivalent years of education; note also that we retain observations of native-born individuals who are not still studying in the year of the survey (2005), with valid information about own, paternal and maternal completed education. We use only the sub-sample of native-born individuals because a) we aimed to relate the patterns of educational mobility to institutional changes, and b) we want to avoid including individuals who have been potentially exposed to different institutional environments. For brevity reasons, we neglect gender differences, which will be an issue of future research on this topic.

3.1 Baseline Mobility Index: Levels, Temporal Patterns and the Role of Father and Mother.

The analysis of the baseline mobility index, computed separately for each birth cohort¹³ and for each country, can give us an impression of *i*) which is the global degree of educational persistence in Europe and *ii*) how educational mobility has evolved over 40 years (that is, for individuals born between 1940 and 1980). Figures 1a-c represent the temporal evolution of the mobility index with the (bootstrapped) confidence interval in solid lines (the same information is also contained in table 4); moreover, the figures also report *iii*) the separate contribution of mobility with respect to the father and mobility with respect to the mother in dashed and dot-dashed lines, respectively.

With respect to the first point, in general we observe that the degree of educational mobility is always higher in Nordic countries than in the rest, with an important exception in the case of France, which shows very high levels of educational mobility over the entire period, which is probably due to its free and very open educational system. The rest of the Continental countries are situated in an intermediate position in our country grouping, although Belgium displays somewhat lower levels of mobility than Austria and the Netherlands. As expected, Southern countries exhibit very low levels of educational mobility, particularly if compared to Nordic countries (apart from the case of Greece, which shows fairly higher levels of mobility than the rest of the group).

Regarding the temporal evolution of educational persistence, we might claim that, in general, educational mobility has increased in the period in the 12 European countries analysed. However, as also noted by Chevalier et al. (2009), the tendency is heterogeneous enough among countries, mainly depending on the starting point (that is, on the degree of educational mobility in the first birth cohort 1940-45). In fact, for countries that exhibit high levels of mobility in the first cohorts (for example, the Nordic countries), educational persistence seems rather stable over the 40 years considered. Confirming this intuition, the same happens for France (with initial mobility close to 0.8), and to a less extent in Austria (starting with values around 0.7), where the evolution of educational mobility is roughly constant over the entire time span¹⁴. Moreover, in

¹³ As in Nicoletti and Ermisch (2007), or in Mayer and Loopo (2005) we have also tested a rolling specification, by progressively adding one year to each five-year birth cohort (1940-45, 1942-46 and so on); however, this specification does not modify the general results, nor does it affect the temporal patterns of the mobility index (it only artificially increases the number of points in which the mobility index is calculated).

¹⁴ Note that in Austria there is a pronounced inflection between the 1940-45 cohort and the 1955-60 cohort, which is probably due to a WWII effect on educational mobility; however, educational mobility is essentially stable up to the end of the period.

the case of Denmark, the intergenerational persistence of educational attainment increases to some extent in the last cohorts (mobility reduced by approximately 0.1), probably because this country held very high levels of mobility at the beginning of the period¹⁵. Among the Nordic countries, this common behaviour is only broken in the Norwegian case, where the initial mobility was of 0.66 (relatively lower than in the rest of high-mobility countries); nevertheless, in this country, mobility substantially increases over time, with an important jump of 0.1 points between 1955-60 and 1960-65, approaching a final value of 0.8 (mean rate of increase of 0.025 per cohort).

[FIGURES 1a-1c ABOUT HERE]

Additionally, we observe a moderate and stable increase in educational mobility for Belgium (apart from the fluctuation in the first three cohorts) and for the Netherlands; indeed, these countries exhibit a mean rate of increase of educational mobility of approximately 0.02 points per cohort, rising above the value of 0.7 at the end of the period¹⁶. Focusing now on the Southern countries, it appears that Greece has also experienced a significant increase in educational mobility during the 40 years analysed; in this country, the average increase of the mobility index over the birth cohorts is very similar to that of the Belgian or of the Dutch case (0.02 per cohort excluding the last one). However, the increase of educational mobility is not so pronounced in the rest of the Southern countries; indeed, Portugal exhibits the lowest general degree of educational mobility, with a very reduced tendency of increase (apart from a discrete jump between 1955-60 and 1965-70). Moreover, Italy and Spain evidently experience an increase in educational mobility (an average increase of 0.014 for each cohort), but both countries maintain considerably lower levels of mobility than other European countries. Moreover, it appears that educational mobility increases in the first half of the period (probably due to the post-war economic recovery and income growth), and then stabilises during the second half for Italy (specifically, from the 1960-65 birth cohort); conversely, for Spain, educational mobility is roughly constant until the 1960-65 birth cohort but rises markedly during the rest of the period considered.

¹⁵ Unfortunately, as commented above, we cannot provide a measure of educational mobility in the first cohorts, due to problems with the information about completed maternal education; however, we suppose that educational mobility at the starting point was significantly high in Denmark.

¹⁶ Note that in both Belgium and the Netherlands but also in Greece, educational mobility seems to decline in the last cohort (1975-80); however, this may just be the result of the exclusion from the sample of those individuals who are still studying in the year of the survey (2005). Reasonably, these individuals are enrolled in higher education, and dropping them from the sample may be apparently reducing the observed degree of mobility in this cohort; in fact, in order to avoid distorting the results, the mean rate of increase of 0.2 has been computed with respect to the first seven cohorts.

Finally, we can analyse the separate contributions of parental and maternal completed education to the global level of educational mobility and how the role of both parents changes over time. The results suggest that, in general, child's education is strongly attached to paternal education rather than to maternal education. In a nutshell, we observe higher levels of educational persistence with respect to the father than with respect to the mother, with an important exception in the case of Austria (where child's education is highly associated with maternal education). However, for many countries, mobility with respect to the father and mobility with respect to the mother are statistically the same for the greater part of the period, given that both are included within the confidence interval of the mobility index: this is the case of Nordic countries (with a small exception for Finland¹⁷), but the same happens for Belgium and Greece.

Nevertheless, for other countries, we observe a well-defined temporal convergence of educational mobility with respect to the two parents. That is, in Austria, maternal education is more attached to child education until the 1965-70 birth cohort, but mobility with respect to the mother and mobility with respect to the father are later practically identical. With a reverse role of fathers and mothers, the convergence occurs in the same cohort for France and for the Netherlands, but for Spain, the convergence between educational mobility with respect to the two parents takes place in the previous cohort, 1960-65 (note that it is the same cohort in which educational mobility starts to increase, following the implementation of the compulsory education reform, which took place after 1970). Probably, this general convergence of mobility with respect to fathers and mothers is due to the tendency of equalisation of educational attainment between males and females (in the parents' generation). Conversely, there is no convergence in the case of Italy, where child's education is more attached to parental education than maternal education during the entire period; for Portugal, it seems that only at the end of the period does maternal education matter than paternal education.

Having analysed the general results from the analysis of educational mobility and its temporal evolution, we now move to examining the effect of family characteristics on educational mobility. The results from the simulations described in section 3.2 allow understanding which part of the observed degree of educational mobility is accounted for by other family characteristics. In other words, we want to check to what extent family characteristics act as a mediating factor in the statistical relationship between parental and child's education.

¹⁷ In this country, there is a clear switch in the role of the two parents in the 1965-70 cohort: in fact, before, this cohort child's education is more attached to parental education, but maternal education later has the strongest effect until the end of the period.

3.2 Simulation Results: Intergenerational Mobility and Family Characteristics

In this section, we examine the temporal patterns of the “residual” persistence (the complement to 1 of the mobility simulated index, without any family characteristic), and the contribution that educational circumstances at the family level have on the observed degree of educational mobility. First of all, we need to specify the vector of family characteristics (R) included in the Extended Measurement Model (5); we exploit all the relevant information about family characteristics (when the individual was 14 years old), which is contained in the Intergenerational Transmission of Poverty Module of the 2005 wave of EU-SILC. Specifically, apart from parental and maternal (log) years of education, we include in the extended model a gender indicator, the number of siblings, an indicator of intact family (living with both parents), the frequency of financial problems during childhood (categorical, from 1 to 5), and two indicators that take the value of 1 if the father/mother was unemployed or inactive; finally, we also include an index of family socio-economic status (ISEI)¹⁸. Detailed information about the variables included in the vector of family characteristics is contained in Table 3.

Table 4 contains the baseline mobility index for each country and birth cohort and five versions of the simulated index: namely, in the index A) we eliminate all the $k-1$ cross products ($\hat{\gamma}_{f,m} \times \tilde{\psi}_{f,m}$), which means that we are hypothetically cutting the link between parental education and the entire set of family characteristics. The rest of the simulated indexes ($B-E$) enable the analysis of the following hypothetical situations: we consider which would be the degree of educational mobility B) with no statistical association between parental education and the frequency of financial problems in the family when the individual was 14 years old; or C) removing the statistical association between parental education and the number of siblings. Moreover, we consider D) the degree of educational mobility without any relationship between parental education and socio-economic status or, finally, E) cutting the potential correlation between parental and maternal education (in other words, the potential educational assortative mating)¹⁹. In what follows, we also describe the (relative) contribution of each of these elements

¹⁸ The (international) socioeconomic status index (ISEI) is defined in terms of parental occupation, according to Ganzeboom et al. (1992); in order to obtain a proxy of “family” socio-economic status, we take the highest ISEI between the two parents. Note that, unfortunately, the Swedish data do not contain information about parental occupation or about the number of siblings. Moreover, for Greece and Portugal, the information about the frequency of financial problems during the childhood is not provided. For these countries, we specify the Extended Measurement Model with the rest of variables; therefore, because of this data limitation, the simulation results for Sweden, Greece and Portugal must be considered with caution.

¹⁹ The first simulation allows for comparing changes in the degree of “residual mobility” across countries and cohorts. Moreover, we only report the results from these some selected simulations because financial problems, siblings, socioeconomic status and

to the total effect of family characteristics. The same information can also be inspected with the graphic representation in Figures 2a-2c for the three groups of European countries, respectively.

The analysis of residual educational persistence (the complement to one of the simulated mobility index (A)) represents the degree of intergenerational persistence once accounting for the total contribution of family characteristics. This indicates, in a broad sense, the net effect of the labour market and educational institutions in generating persistence in educational attainment. Such effects appear to be increasing in the case of Denmark and Finland, indicating that in these two Nordic countries, the (independent) role of institutions seems to increase with the course of time. For the rest of countries, it decreases (with the exception of France and Italy, which show more stable values) but it never approaches the value of zero, suggesting that institutions always play a role in intergenerational persistence in some way. In fact, residual mobility decreases to the value of 0.1 for Norway, Sweden, Austria, Belgium, France, and, to a lesser extent, for Greece. Nevertheless, it remains higher for Italy, Portugal and Spain. Note that residual mobility is also higher for the Netherlands, suggesting that this country evidently appears highly mobile, but this result is mainly guaranteed by the role of institutions.

[FIGURES 2a-2c ABOUT HERE]

As an initial step for describing the role of the family in educational mobility, we compute the global impact of family characteristics on educational persistence²⁰; the results obtained provide a general picture describing the total contribution of family characteristics on the observed persistence of educational attainment. The effect of removing the statistical association between parental years of schooling and educational circumstances at the family level is especially low in Nordic countries. In particular, the global effect of family characteristics clearly decreases with time for Finland and for Norway (less than 0.1 in the last cohorts) and is almost stable for Denmark and Sweden (0.1 for the former and 0.08 for the latter). On the contrary, the total effect of family characteristics is clearly higher for Southern countries, as in these countries, a significant component of the observed intergenerational persistence in educational attainment is represented by the contribution of family characteristics: specifically, it accounts for something less than 0.2 points for Greece, Italy and Spain and something more than the same value for Portugal. With respect to this last point, two findings for Continental

assortative mating are the only factors that significantly affect educational mobility. Nevertheless, detailed decompositions and estimation results are not reported here but are available upon request by the authors.

²⁰ The impact of family characteristics on intergenerational persistence in educational attainment is computed as the difference between global observed persistence (1-baseline index) and the simulated persistence without the effect of educational circumstances at the family level (1-simulated index A).

European countries are somewhat unexpected: the impact of family characteristics on observed mobility is considerably high in Belgium (between 0.15 and 0.25) but is very low in the Netherlands (less than 0.15); this confirms that, in terms of educational attainment, the latter country appears to be a high-mobility country. The statistical association with family characteristics has also a small contribution to observed persistence in France; however, in this country, the effect of family characteristics increases to some extent in the last cohort. Moreover, the contribution of family characteristics to educational mobility tends to decrease over time in Austria (apart from the last two cohorts) and the Netherlands, indicating that in these countries, (as in Finland and in Norway) education transmission is less and less affected by familiar educational circumstances. On the contrary, for the rest of countries, the effect of educational circumstances at the family level remains almost constant over the period analysed (and increases in the case of Portugal).

In order to obtain a better insight into the link between family characteristics and intergenerational mobility, we now move to analysing the most important components of educational circumstances at the family level. First, the graphical results presented in Figures 2a-2c indicate that the frequency of financial problems during childhood (*B*) has no significant impact on educational mobility in Nordic and Continental countries (less than 10 percent of the total effect of family characteristics); however, the simulated mobility index (*B*) with no statistical association between parental education and the frequency of financial problems is slightly out of the confidence interval of the baseline index for Italy and for Spain, accounting for 10% of the estimated relationship among family characteristics and educational mobility. Unfortunately, the information about the frequency of financial problems is not available for Greece and Portugal; we expect that, particularly for these two Southern countries, this weak proxy for liquidity constraints²¹ could have an important effect on educational mobility.

Second, the simulated mobility index (*C*) suggests that, in Nordic countries, the association between parental education and the number of siblings has a relatively low impact on educational persistence compared to other family characteristics (with the exception of Norway in the first four cohorts). For Continental countries, the presence of siblings also has a very small contribution for Belgium and for the Netherlands (confirming that the latter country behaves in a similar way to Nordic countries); somewhat higher effects are found in the case of Austria, but for France, the correlation between the number of siblings and parental education represents a

²¹ This is a weak proxy because this variable is *i*) subjective, and *ii*) potentially affected by recall problems; indeed, it is often called “subjective financial well-being”. Perhaps it is exactly for this reason that its effect on educational mobility is extremely low. In any case, its inclusion in the extended model is still interesting.

very important component of family characteristics (accounting for about 20-30% of the total effect for a relevant part of the analysed period). Moreover, for Southern countries, the effect of siblings seems to increase with time, approaching a proportion of the total effect of family characteristics of about 15 percent in the last cohorts.

Third, family socio-economic status (defined in terms of parental occupation) has a clear significant effect on educational persistence; that is, in general, the simulated mobility index (D), in which the existing statistical relationship between parental education and socio-economic status has been removed, exhibits higher levels of educational mobility. This would mean that an important component of the intergenerational persistence of educational attainment is related to the socio-economic status of the family. However, with respect to our countries' grouping (Nordic, Continental and Southern), the relative effect of socio-economic status on educational mobility shows a reverse ranking. Indeed, the relative socio-economic component is higher in Nordic countries because it generally accounts for about the 50% of the statistical association between parental education and family characteristics. An intermediate position is occupied by Continental countries, where socio-economic status represents something less than one half of the effect of family characteristics (apart from the case of Austria). However, the relative effect of family socio-economic status in educational persistence (with respect to overall family characteristics) is lower for Southern countries; in these countries, the statistical association between parental education and socio-economic status shows a proportion between 20 and 45 percent of the total effect of family characteristics.

Finally, from the simulation results, we can claim that a relevant circumstance for educational mobility is the presence of educational assortative mating; as explained above, an important component of the statistical association between parental schooling and children's achievements may be represented by the covariance between paternal and maternal education. Due to the mechanical of the mobility index proposed, the potential statistical relationship between the completed years of education of the two parents is implicitly considered as a family characteristic; this means that parental matching according to completed education could represent a (significant) component of the absolute degree of educational mobility. The evidence that the simulated index (E) is, in general, higher than the baseline indicates that 1) parental mating is assortative according to education and that 2) this reinforces the degree of intergenerational persistence in educational attainment. Concretely, about 40% of the family characteristics component of educational persistence can be attributed to the strong correlation in human capital between the parents. Moreover, the relative effect of (parental) educational

assortative mating is almost constant over time, with the exception of Denmark and Finland, where the relative contribution of parental matching in educational mobility seems to increase across the cohorts²².

4. Discussing the Results

In this section, we try to analyse the obtained results concerning the degree of intergenerational mobility in educational attainment and its evolution across eight birth cohorts (1940-1980) in the selected European countries. Confirming the previous results, we find that Nordic European countries display higher levels of mobility than the other countries; moreover, our study also reports very high levels of educational mobility for France. Moreover, Continental countries are situated in an intermediate position, although, within the rest of countries of this group, Belgium exhibits lower levels of mobility than Austria and the Netherlands. Finally, as expected, Southern countries have the highest level of persistence in educational attainment.

We claim that this heterogeneous picture of educational mobility in Europe is principally the product of differences in the educational systems and in the amount of public expenditure on education. Indeed, we show that Southern countries have a lower level of mobility, which is probably the result of the delayed implementation of compulsory school reforms, relative to Continental and Nordic countries (see Fort 2006 for a good review of educational reforms in Europe). Moreover, historically, the former countries invested substantially less public resources in education, which may have also constrained the degree of intergenerational mobility in educational attainment (as shown in table 4). Additionally, Nordic countries might display the highest level of mobility, as these countries were pioneers in introducing a comprehensive structure of secondary education; in fact, comprehensive secondary education considerably reduces the statistical association between child's schooling and parental background (that is, a *ceteris paribus* increase in educational mobility). However, in order to fully explain the higher level of mobility in Nordic countries, as suggested by Hassler et al. (2007) we might also consider the higher level of wage compression and labour market rigidity in Southern and (to a lesser extent) in Continental countries, which may reduce educational mobility (because of the lower incentives to invest in children's education).

²² Note also that in the Swedish case, assortative mating accounts for almost the 100% of family characteristics effects on educational mobility; indeed, this arise from the lack of relevant information about family characteristics in the Sweden data (concretely, parental occupation and the number of siblings).

With respect to temporal patterns, we report a general increase of educational mobility during the 40 years considered: nevertheless, the tendency is not homogeneous and mainly depends on the starting point (that is, the degree of mobility reported for the first cohort). Indeed, the rate of increase of educational mobility is higher for those countries with the lowest level of mobility in the first birth cohort (1940-45); furthermore, it remains almost stable over time for those countries with very high initial mobility (Nordic countries, except Norway, and France).

The most important message from the evidence on the temporal patterns is that there exists a sort of ceiling of educational mobility; that is, in countries where the degree of educational mobility was already very high at the beginning of the period, mobility remains stable or even decreases. This means that, to some extent, educational attainment is always related to parental background, regardless of the design of the educational system or of the amount of public expenditure on education. However, we must also emphasise the significant improvements in educational mobility experienced for many Southern and Continental countries during the period analysed. For the latter, we observe a clear tendency of convergence to the levels of mobility of the Nordic countries. However, for the former group, the complete convergence is still very distant, occurring at the end of the period. Even so, we believe that with data referring to a more recent period of time, we may have observed a further reduction of the distance between Southern and Nordic countries in terms of educational mobility²³.

Regarding the separate contributions of fathers and mothers, we observe that for Nordic countries, Belgium and Greece, there is no statistical distinction between the two. On the contrary, for the rest of the countries, individual education is more attached to parental education than to maternal education, with the exception of Austria, where we find the opposite result. However, we obtain very interesting evidence that, at given point in time (depending on the country) the degree of educational mobility with respect to each parent converges to the same level. Even so, the general message is that considering only the intergenerational elasticity with respect to the father (common practice in the empirical literature) may distort, to some extent, the conclusions about the degree of intergenerational persistence of socio-economic status.

This result may be in part related to the reduction in the gender gap in educational attainment in the parents' generation. However, we also observe a convergence between the degree of mobility with respect to fathers and mothers in countries where the mean gap in educational

²³ Nevertheless, we must also stress the fact that for Italy and Portugal we find that the temporal patterns of educational mobility are roughly stable (especially in Italy at the end of the period).

attainment between the two parents persists (namely, France, the Netherlands, Portugal and Spain)²⁴. Therefore, for explaining the convergence of fathers and mothers in the contribution to total mobility, we might search for other explanations: an interesting possibility is the changing role of the mothers in the family and in the cognitive development of the child, which is also related to the increasing participation of women in the labour market. However, note that we carried out the analysis neglecting gender differences; that is, we computed the mobility index for the overall sample, including both males and females. Perhaps by considering males and females in a separate fashion, we would find more evidence on the role of fathers and mothers in educational mobility (interesting issue for future research).

Finally, we find substantial effects of family characteristics on the degree of intergenerational persistence in educational attainment; however, this effect is not the same for all the countries, with lower effects recorded for Nordic countries, France and for the Netherlands. Between the components of family characteristics, which exert some effect, we find that the effect of financial problems is generally low (perhaps due to the subjective nature of the variable); moreover, the effect of the number of siblings on educational mobility also seems to be small. Nevertheless, our results suggest that family socio-economic status and parental assortative mating according to education have significant effects on educational mobility, which are also likely to remain constant over time.

In general, the obtained evidence indicates that understanding the role of family characteristics in “mediating” the relationship between parental education and children’s schooling is crucial for the analysis of educational mobility. This is because *i*) parental education is statistically associated with other family characteristics and *ii*) those family characteristics operate (even if not in a causal sense) as a determinant of children’s educational attainment. Therefore, especially in countries with stratified educational systems, family characteristics represent “educational circumstances”, or, more specifically, elements that influence educational attainment but are out of the control (or responsibility) of the individuals (children). This means that policies aimed at reducing the degree of intergenerational persistence of education, in order to achieve equality of opportunity, may also be directed to cutting the link between family characteristics and educational attainment. Once again, we believe that the only way of reaching a significant increase in educational mobility is through the introduction of a comprehensive secondary education system that is compulsory until the age of 18. Indeed, this kind of

²⁴ The results are not showed here, but are available upon request by the authors.

educational policy has been implemented in some European countries and is part of the educational policy agendas in many others.

5. Conclusions

This paper adds some new evidence to the literature of intergenerational mobility; specifically, we explore the degree of educational mobility in 12 European countries and its evolution across eight birth cohorts, covering individuals born between 1940 and 1980. Exploiting the cross-country comparable information about individual and parental educational attainment in the 2005 wave of the EU-SILC, we have tried to fill the gap in comparative studies of intergenerational mobility (especially for southern countries). We used a new index of intergenerational mobility, which accounts for both absolute and relative changes in educational mobility. Moreover, the proposed index enables the consideration of the global degree of mobility as the weighted sum of mobility with respect to the parents; additionally, the statistical properties of the same index permit the analysis of the role of family characteristics on the observed intergenerational persistence of educational attainment. In other words, we treated family characteristics as “mediating factors” in the statistical association between parental and child’s schooling.

Summarising the results, we show that educational mobility is higher in Nordic countries and lower in the Southern countries and that the Continental countries are situated in an intermediate position. Furthermore, educational mobility tends to increase in Southern countries and in some Continental countries, but it is almost stable in Nordic countries and in France; this is because the latter countries exhibit a very high level of mobility from the beginning of the period analysed, suggesting that there exists a sort of “ceiling” of intergenerational mobility. We have also found that mobility with respect to the father and mobility with respect to the mother converge to the same level for almost every country (except Italy and Portugal); this may be in part due to the reduction of the gender gap in educational attainment during the parents’ generation, but we believe that the most relevant explanations for that convergence are the changing role of the mother within the family and the cognitive development of the child. Moreover, we expect potentially different results in the case of considering educational transmission for males and females.

Finally, we suggest that family characteristics account for a significant part of the observed educational persistence, mainly represented by the effect of socio-economic status and parental educational assortative mating. The significant correlation between family socio-economic status and parental education exacerbates the degree of intergenerational persistence because socio-economic status matters for the children's education. Moreover, parents are likely to match according to education, and this contributes to reinforce the intergenerational correlation of socio-economic status; that is, parental assortative mating acts as a family characteristic, mediating the relationship between parental and child's completed education. Therefore, gender differences and a more detailed investigation of the channels through which family characteristics affect mobility represent new and interesting topics, which will be the subject of future research on intergenerational mobility.

References

- Behrman J.R. & Rosenzweig, M. (2002). Does Increasing Women's Schooling Raise the Schooling of the Next Generation?, *American Economic Review*, American Economic Association, vol. 92(1), pages 323-334.
- Blanden, J. (2009). Intergenerational Income Mobility in a Comparative Perspective, in Dolton, P. Apslund, R. & Barth, E. (eds.), *Education and Inequality Across Europe*, Edward Edgar.
- Blanden, J., Gregg, P. & Macmillan, L. (2007). Accounting for Intergenerational Income Persistence: Noncognitive Skills, Ability and Education, *Economic Journal*, vol. 117(519), pp. C43-C60, 03.
- Checchi, D., Ichino, A & Rustichini, A. (1999). More equal but less mobile?: Education financing and intergenerational mobility in Italy and in the US, *Journal of Public Economics*, Elsevier, vol. 74(3), pages 351-393.
- Checchi, D., Fiorio, C.V. & Leonardi, M. (2008). Intergenerational Persistence in Educational Attainment in Italy, IZA Discussion Papers 3622, Institute for the Study of Labor (IZA).
- Checchi, D. (2006) *The Economics of Education. Human Capital, Family Background and Inequality*. Cambridge University Press.
- Chevalier, A. (2004). Parental Education and Child's Education: A Natural Experiment, IZA Discussion Papers 1153, Institute for the Study of Labor (IZA).
- Chevalier, A., Denny, K. & McMahon, D. (2009). A Multi-country Study of Inter-generational Educational Mobility, in Dolton, P. Apslund, R. & Barth, E. (eds.), *Education and Inequality Across Europe*, Edward Edgar.
- Comi, S. (2003). Intergenerational mobility in Europe: evidence from ECHP, Departemental Working Papers 2003-03. Department of Economics, University of Milan, Italy.
- Corak, M. (2004). Generational Mobility in North America and Europe: an Introduction, in Corak M (eds.), *Generational Mobility in North America and Europe*, Cambridge University Press.
- Erikson R., & Godthorpe J.H. (2002). Intergenerational Inequality: A Sociological Perspective, *Journal of Economic Perspectives*, vol. 16, 31-44.
- Ermisch J., Francesconi M. (2004), Intergenerational Mobility in Britain: New Evidence, in M. Corak (ed.), *Generational Income Mobility in North America and Europe*, Cambridge University Press.
- Ermisch, J., Francesconi, M. & Siedler, T. (2006). Intergenerational Mobility and Marital Sorting, *Economic Journal*, vol. 116(513), pp. 659-679, 07.
- Esping-Andersen, G. (2004). Unequal Opportunities and the Mechanisms of Social Inheritance, in Corak M (eds.), *Generational Mobility in North America and Europe*, Cambridge University Press.
- Ganzeboom, H.B.G., P.M. de Graaf & D.J. Treiman, (1992). A standard international socio-economic index of occupational status, *Social Science Research* vol. 21, pp. 1-56.
- Goldthorpe, J.H. & C. Mills. (2005). Trends in intergenerational class mobility in Britain in the late twentieth century, in Breen R. (ed.), *Social Mobility in Europe*, Oxford University Press.
- Güell, M., Rodríguez-Mora, J. V. & Telmer, C. I. (2007). Intergenerational Mobility and the Informative Content of Surnames . CEPR Discussion Paper No. DP6316.
- Hassler, J., Rodríguez-Mora, J.V. & Zeira, J. (2007). Inequality and mobility, *Journal of Economic Growth*, Springer, vol. 12(3), pp. 235-259.
- Heineck, G. & Riphahn, R.T. (2009). Intergenerational Transmission of Educational Attainment in Germany - The Last Five Decades, *Journal of Economics and Statistics (Jahrbuecher fuer Nationaloekonomie und Statistik)*, Justus-Liebig University Giessen, Department of Statistics and Economics, vol. 229(1), pp. 36-60.
- Hertz, T., Jayasundera, T., Piraino, P. Selcuk, S., Smith, N. & Verashchagina, A. (2008) The Inheritance of Educational Inequality: International Comparisons and Fifty-Year Trends, *The B.E. Journal of Economic Analysis & Policy* Vol. 7(2) (Advances), Article 10.

- Lee, C.I. & Solon G. (2009). Trends in Intergenerational Income Mobility, *Review of Economics and Statistics*, vol. 9(4), pp. 766-772.
- Mayer, S. E. & Lopoo, L.M. (2005). Has the Intergenerational Transmission of Economic Status Changed? *The Journal of Human Resources* vol. 40, pp. 169–185.
- Nicoletti, C. & Ermisch, J. (2007). Intergenerational Earnings Mobility: Changes across Cohorts in Britain, *The B.E. Journal of Economic Analysis & Policy*, Vol. 7(2) (Contributions), Article 9.
- Oreopoulos, P. & Page, M. (2006). The Intergenerational Effects of Compulsory Schooling, *Journal of Labor Economics*, University of Chicago Press, vol. 24(4), pp. 729-760.
- Plug, E. (2004). Estimating the Effect of Mother's Schooling on Children's Schooling Using a Sample of Adoptees, *American Economic Review*, American Economic Association, vol. 94(1), pp. 358-368.
- Sacerdote, B. (2002). The Nature and Nurture of Economic Outcomes, *American Economic Review*, American Economic Association, vol. 92(2), pp. 344-348.
- Solon, G. (1999). Intergenerational Mobility in the Labor Market, in Orley Ashenfelter and David Card (eds.), *Handbook of Labor Economics*, vol. 3A, pp. 1761-1800, Amsterdam: North-Holland, 1999.
- Solon, G. (2002). Cross-Country Differences in Intergenerational Earnings Mobility, *Journal of Economic Perspectives*, vol. 16(3), pp. 59-66.
- Solon, G. (2004). A Model of Intergenerational Mobility Variation over Time and Place, in M. Corak ed. *Generational Income mobility in North America and Europe*, Cambridge University Press.

APPENDIX

TABLE 1: DEFINITION AND SAMPLE SIZE OF BIRTH COHORTS

BIRTH COHORT	NORDIC COUNTRIES				CONTINENTAL COUNTRIES				SOUTHERN COUNTRIES			
	<i>Denmark</i>	<i>Finland</i>	<i>Norway</i>	<i>Sweden</i>	<i>Austria</i>	<i>Belgium</i>	<i>France</i>	<i>Netherlands</i>	<i>Greece</i>	<i>Italy</i>	<i>Portugal</i>	<i>Spain</i>
1940-45	313	816	403	491	504	567	986	543	788	3358	712	2092
1945-50	282	985	421	432	474	648	1193	585	804	3506	688	1987
1950-55	269	879	409	383	491	669	1185	533	889	3181	704	1997
1955-60	396	799	437	355	567	705	1213	558	886	3413	761	2313
1960-65	479	733	434	400	556	730	1298	677	870	3781	754	2455
1965-70	461	621	429	390	533	663	1215	669	915	3582	663	2174
1970-75	380	493	362	374	377	546	1129	511	824	3302	581	2035
1975-80	184	393	209	257	217	390	667	257	604	2032	419	1409
TOTAL	2764	5719	3104	3082	3719	4918	8886	4333	6580	26155	5282	16462

TABLE 2: CONVERSION ISCED LEVELS INTO EQUIVALENT YEARS OF EDUCATION

COMPLETED EDUCATION—ISCED	ISCED 1	ISCED 2	ISCED 3	ISCED 4	ISCED 5-6
NORDIC COUNTRIES					
Denmark	6	9	12	13	15
Finland	6	9	12	13	16
Norway	6	9	12	13	16
Sweden	6	9	12	13	15
CONTINENTAL COUNTRIES					
Austria	4	8	12	13	16.5
Belgium	6	8	12	13	16.5
France	5	9	11	12	15.5
Netherlands	6	9	12	13	15
SOUTHERN COUNTRIES					
Greece	6	9	12	13	16.5
Italy	5	8	13	14	18
Portugal	6	9	12	13	16
Spain	6	8	12	13	17

Note: we apply the same conversion for individual applied for parents.

TABLE 3: EXPLANATORY VARIABLES OF THE EXTENDED MEASUREMENT MODEL

VARIABLE	DEFINITION	MAXIMUM	MINIMUM
log(father's years of education)	<i>logarithm of imputed years of education (father)</i>	<i>country specifics</i>	
log(mother's years of education)	<i>logarithm of imputed years of education (mother)</i>		
gender	<i>dichotomic: 1 if male</i>	0	1
number of siblings	<i>number of brothers/sisters when the individual was 14</i>	0	21
father not working	<i>dichotomic: 1 if the father was unemployed or inactive when the individual was 14</i>	0	1
mother not working	<i>dichotomic: 1 if the mother was unemployed or inactive when the individual was 14</i>	0	1
intact family	<i>dichotomic: 1 if the individual was living with both parents when he/she was 14</i>	0	1
highest parental ISEI	<i>socio-economic status index (occupation); highest among the two parents</i>	16	80

FIGURE 1a: MOBILITY INDEX — NORDIC COUNTRIES

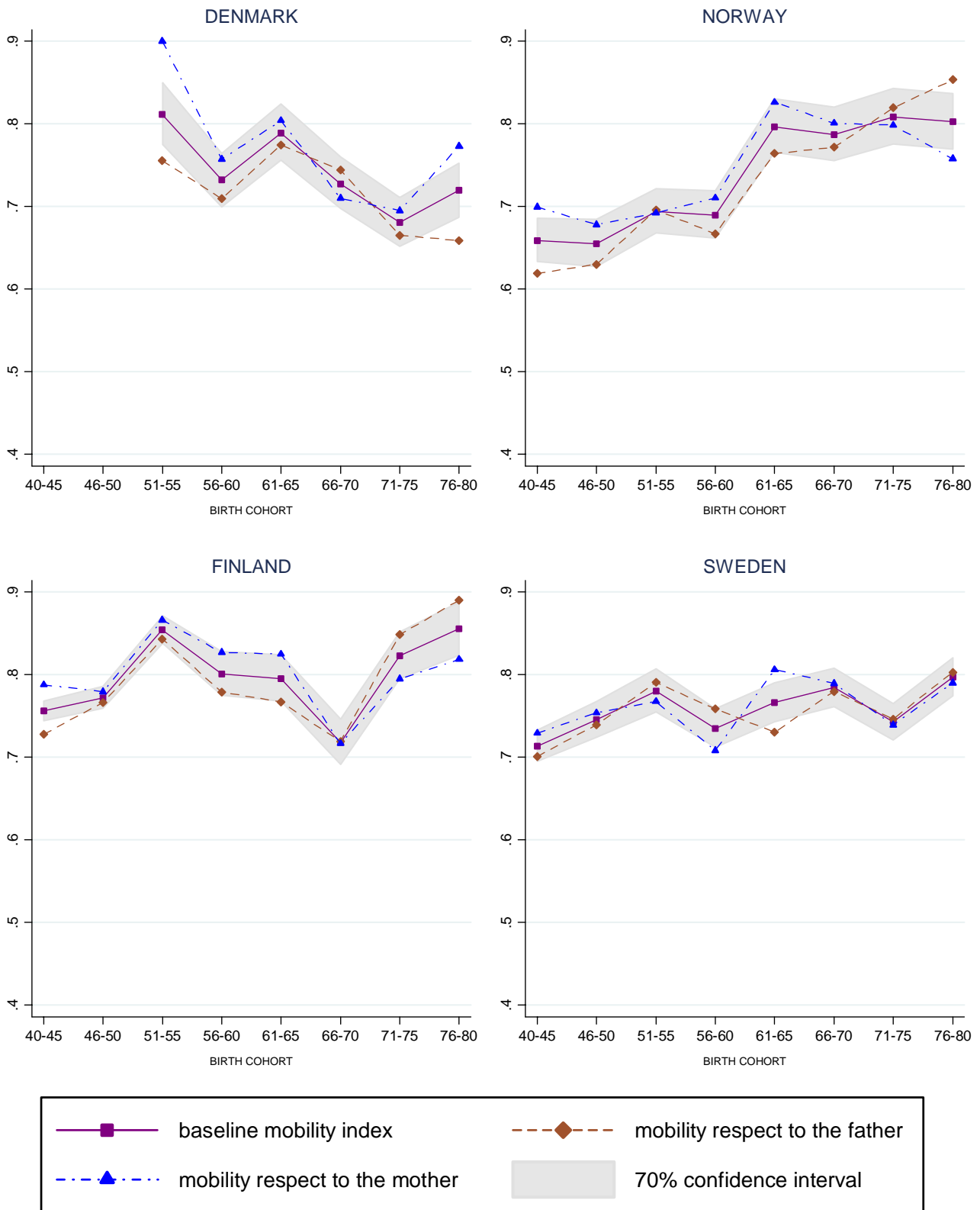


FIGURE 1b: MOBILITY INDEX — CONTINENTAL COUNTRIES

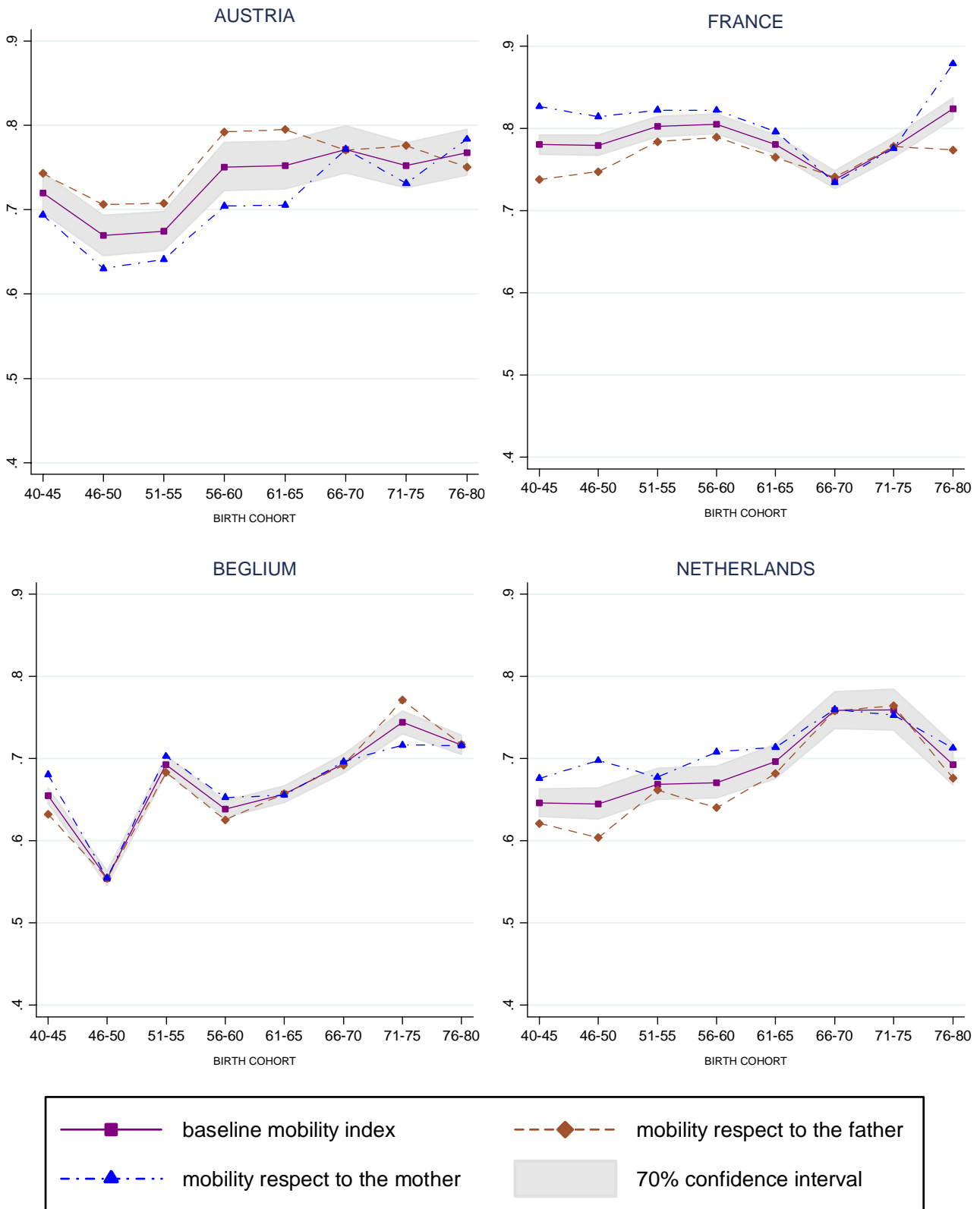


FIGURE 1c: MOBILITY INDEX — SOUTHERN COUNTRIES

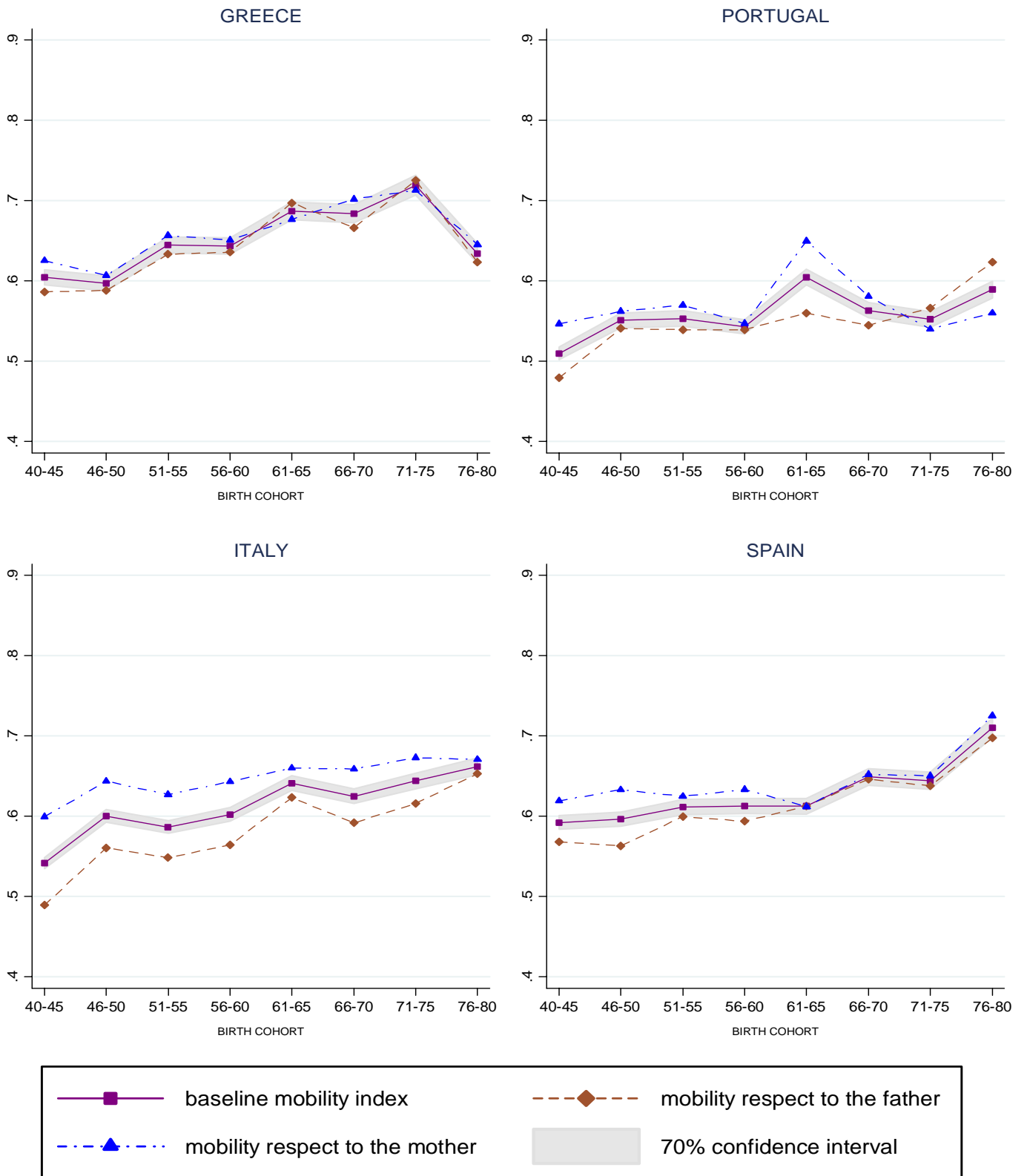
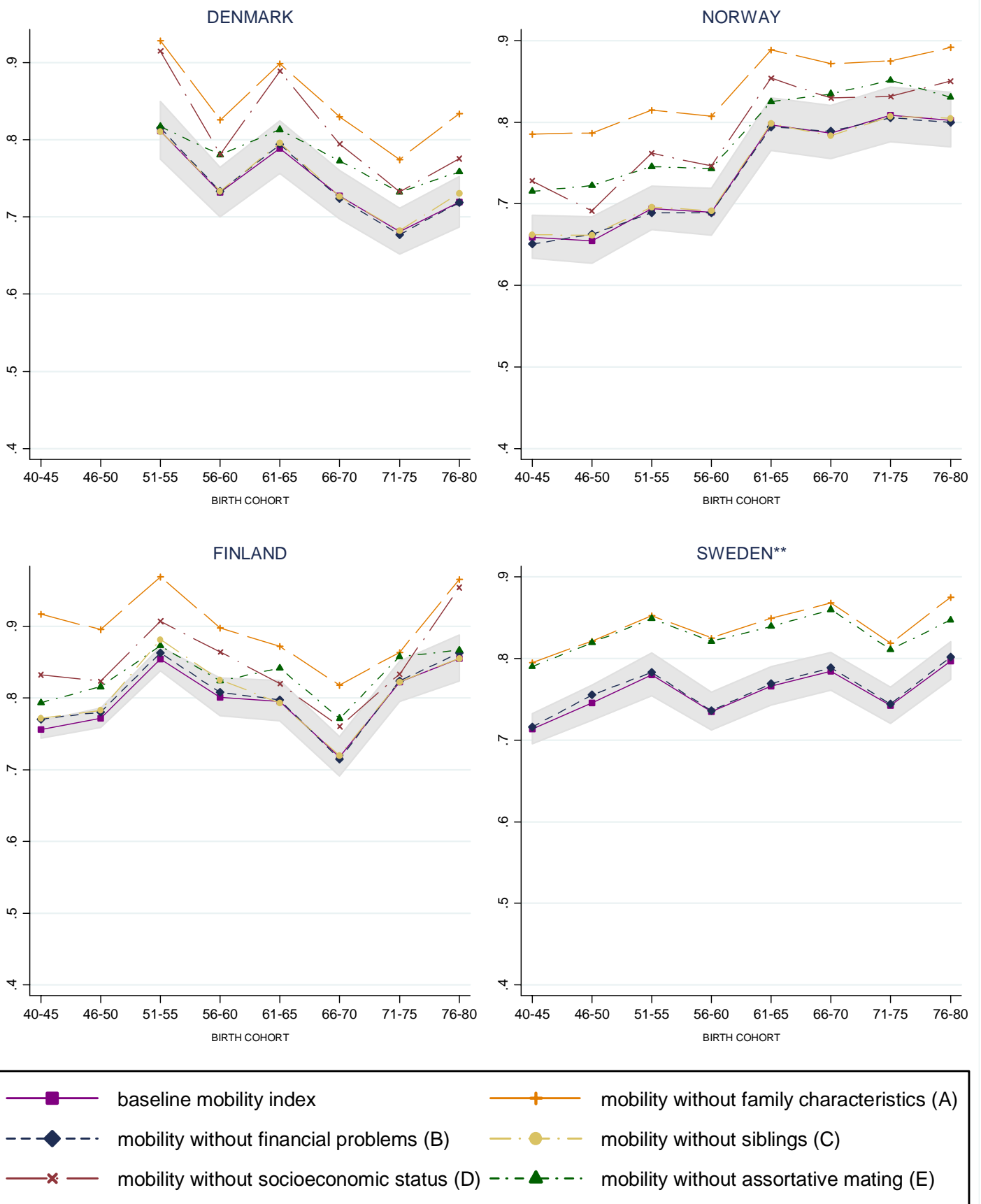


FIGURE 2a: SIMULATED MOBILITY INDEX — NORDIC COUNTRIES



* NO INFORMATION ABOUT THE FREQUENCY OF FINANCIAL PROBLEMS

** NO INFORMATION ABOUT PARENTAL OCCUPATION OR ABOUT THE NUMBER OF SIBLINGS

2007

- 2007/1. Durán Cabré, J.M^a.; Esteller Moré, A.: "An empirical analysis of wealth taxation: Equity vs. tax compliance"
- 2007/2. Jofre-Monseny, J.; Solé-Ollé, A.: "Tax differentials and agglomeration economies in intraregional firm location"
- 2007/3. Duch, N.; Montolio, D.; Mediavilla, M.: "Evaluating the impact of public subsidies on a firm's performance: A quasi experimental approach"
- 2007/4. Sánchez Hugalde, A.: "Influencia de la inmigración en la elección escolar"
- 2007/5. Solé-Ollé, A.; Viladecans-Marsal, E.: "Economic and political determinants of urban expansion: Exploring the local connection"
- 2007/6. Segarra-Blasco, A.; García-Quevedo, J.; Teruel-Carrizosa, M.: "Barriers to innovation and public policy in Catalonia"
- 2007/7. Calero, J.; Escardíbul, J.O.: "Evaluación de servicios educativos: El rendimiento en los centros públicos y privados medido en PISA-2003"
- 2007/8. Argilés, J.M.; Duch Brown, N.: "A comparison of the economic and environmental performances of conventional and organic farming: Evidence from financial statement"

2008

- 2008/1. Castells, P.; Trillas, F.: "Political parties and the economy: Macro convergence, micro partisanship?"
- 2008/2. Solé-Ollé, A.; Sorribas-Navarro, P.: "Does partisan alignment affect the electoral reward of intergovernmental transfers?"
- 2008/3. Schelker, M.; Eichenberger, R.: "Rethinking public auditing institutions: Empirical evidence from Swiss municipalities"
- 2008/4. Jofre-Monseny, J.; Solé-Ollé, A.: "Which communities should be afraid of mobility? The effects of agglomeration economies on the sensitivity of firm location to local taxes"
- 2008/5. Duch-Brown, N.; García-Quevedo, J.; Montolio, D.: "Assessing the assignation of public subsidies: do the experts choose the most efficient R&D projects?"
- 2008/6. Solé-Ollé, A.; Hortas Rico, M.: "Does urban sprawl increase the costs of providing local public services? Evidence from Spanish municipalities"
- 2008/7. Sanromà, E.; Ramos, R.; Simón, H.: "Portabilidad del capital humano y asimilación de los inmigrantes. Evidencia para España"
- 2008/8. Trillas, F.: "Regulatory federalism in network industries"

2009

- 2009/1. Rork, J.C.; Wagner, G.A.: "Reciprocity and competition: is there a connection?"
- 2009/2. Mork, E.; Sjögren, A.; Svaleryd, H.: "Cheaper child care, more children"
- 2009/3. Rodden, J.: "Federalism and inter-regional redistribution"
- 2009/4. Ruggeri, G.C.: "Regional fiscal flows: measurement tools"
- 2009/5. Wrede, M.: "Agglomeration, tax competition, and fiscal equalization"
- 2009/6. Jametti, M.; von Ungern-Sternberg, T.: "Risk selection in natural disaster insurance"
- 2009/7. Solé-Ollé, A.; Sorribas-Navarro, P.: "The dynamic adjustment of local government budgets: does Spain behave differently?"
- 2009/8. Sanromá, E.; Ramos, R.; Simón, H.: "Immigration wages in the Spanish Labour Market: Does the origin of human capital matter?"
- 2009/9. Mohnen, P.; Lokshin, B.: "What does it take for and R&D incentive policy to be effective?"
- 2009/10. Solé-Ollé, A.; Salinas, P.: "Evaluating the effects of decentralization on educational outcomes in Spain?"
- 2009/11. Libman, A.; Feld, L.P.: "Strategic Tax Collection and Fiscal Decentralization: The case of Russia"
- 2009/12. Falck, O.; Fritsch, M.; Heblich, S.: "Bohemians, human capital, and regional economic growth"
- 2009/13. Barrio-Castro, T.; García-Quevedo, J.: "The determinants of university patenting: do incentives matter?"
- 2009/14. Schmidheiny, K.; Brühlhart, M.: "On the equivalence of location choice models: conditional logit, nested logit and poisson"
- 2009/15. Itaya, J.; Okamura, M.; Yamaguchix, C.: "Partial tax coordination in a repeated game setting"
- 2009/16. Ens, P.: "Tax competition and equalization: the impact of voluntary cooperation on the efficiency goal"
- 2009/17. Geys, B.; Revelli, F.: "Decentralization, competition and the local tax mix: evidence from Flanders"
- 2009/18. Konrad, K.; Kovenock, D.: "Competition for fdi with vintage investment and agglomeration advantages"
- 2009/19. Loretz, S.; Moorey, P.: "Corporate tax competition between firms"

- 2009/20. Akai, N., Sato, M.: "Soft budgets and local borrowing regulation in a dynamic decentralized leadership model with saving and free mobility"
- 2009/21. Buzzacchi, L., Turati, G.: "Collective risks in local administrations: can a private insurer be better than a public mutual fund?"
- 2009/22. Jarkko, H.: "Voluntary pension savings: the effects of the Finnish tax reform on savers' behaviour"
- 2009/23. Fehr, H.; Kindermann, F.: "Pension funding and individual accounts in economies with life-cyclers and myopes"
- 2009/24. Esteller-Moré, A.; Rizzo, L.: "(Uncontrolled) Aggregate shocks or vertical tax interdependence? Evidence from gasoline and cigarettes"
- 2009/25. Goodspeed, T.; Haughwout, A.: "On the optimal design of disaster insurance in a federation"
- 2009/26. Porto, E.; Revelli, F.: "Central command, local hazard and the race to the top"
- 2009/27. Piolatto, A.: "Plurality versus proportional electoral rule: study of voters' representativeness"
- 2009/28. Roeder, K.: "Optimal taxes and pensions in a society with myopic agents"
- 2009/29. Porcelli, F.: "Effects of fiscal decentralisation and electoral accountability on government efficiency evidence from the Italian health care sector"
- 2009/30. Troumpounis, O.: "Suggesting an alternative electoral proportional system. Blank votes count"
- 2009/31. Mejer, M., Pottelsberghe de la Potterie, B.: "Economic incongruities in the European patent system"
- 2009/32. Solé-Ollé, A.: "Inter-regional redistribution through infrastructure investment: tactical or programmatic?"
- 2009/33. Joanis, M.: "Sharing the blame? Local electoral accountability and centralized school finance in California"
- 2009/34. Parcerro, O.J.: "Optimal country's policy towards multinationals when local regions can choose between firm-specific and non-firm-specific policies"
- 2009/35. Cordero, J.M.; Pedraja, F.; Salinas, J.: "Efficiency measurement in the Spanish cadastral units through DEA"
- 2009/36. Fiva, J.; Natvik, G.J.: "Do re-election probabilities influence public investment?"
- 2009/37. Haupt, A.; Krieger, T.: "The role of mobility in tax and subsidy competition"

2010

- 2010/1. De Borger, B., Pauwels, W.: "A Nash bargaining solution to models of tax and investment competition: tolls and investment in serial transport corridors"
- 2010/2. Chirinko, R.; Wilson, D.: "Can Lower Tax Rates Be Bought? Business Rent-Seeking And Tax Competition Among U.S. States"
- 2010/3. Esteller-Moré, A.; Rizzo, L.: "Politics or mobility? Evidence from us excise taxation"
- 2010/4. Roehrs, S.; Stadelmann, D.: "Mobility and local income redistribution"
- 2010/5. Fernández Llera, R.; García Valiñas, M.A.: "Efficiency and elusion: both sides of public enterprises in Spain"
- 2010/6. González Alegre, J.: "Fiscal decentralization and intergovernmental grants: the European regional policy and Spanish autonomous regions"
- 2010/7. Jametti, M.; Joanis, M.: "Determinants of fiscal decentralization: political economy aspects"
- 2010/8. Esteller-Moré, A.; Galmarini, U.; Rizzo, L.: "Should tax bases overlap in a federation with lobbying?"
- 2010/9. Cubel, M.: "Fiscal equalization and political conflict"



U
UNIVERSITAT DE BARCELONA
B

ieb@ub.edu
www.ieb.ub.edu

Document de
treball de l'IEB